



Contents

J-101	Design Specifications	J-302	Facade of Doors and Windows
J-102	Floor Plan	J-303	Architectural Details of Doors
J-103	Ceiling Plan	J-304	Architectural Details of Windows
J-104	Diagram of General Kitchen and Bathroom Module	J-401	Lighting Power Layout
J-105	Diagram of Foldable Module	J-402	Socket Power Layout
J-106	3D Section View	J-403	Diagram of Power System
J-201	East Elevation Layout	J-404	Water Supply and Drainage Plan
J-202	South Elevation Layout	J-405	Diagram of Water Supply and Drainage System
J-203	West Elevation Layout	J-501	Section View of Wallboard
J-204	North Elevation Layout	J-502	Section View of Floor and Ceiling
J-205	Architectural Section	J-601	Diagram of Sealing Node
J-301	Doors and Windows Layout	J-701	3D Structure Diagram

Copyright 2016.

本图版权归浙江普天集成房屋有限公司所有，除本工程外对本图的任何其它用途和复制，必须获得本公司的书面许可。
THE OWNERSHIP OF THE COPYRIGHT IN THIS DRAWING IS RETAINED BY ZHEJIANG PUTIAN INTEGRATED HOUSING CO.,LTD. WRITTEN CONSENT MUST BE OBTAINED BEFORE ANY USE OR REPRODUCTION OF THE DRAWING.

版本 Rev.	修改内容 Description	日期 Date	发布人 who send
------------	---------------------	------------	-----------------

PTH

Zhejiang Putian integrated housing Co., Ltd.
Hangzhou Zhongpu Architecture Design (institute) Co., Ltd.

证书等级

证书编号

合作设计单位
Cooperative Designer

工序 Process	签名 Signature	日期 Date
审定 Authorized By		
审核 Verfied By		
项目负责人 Process		
校对人 Checked By		
设计 Designed By		
制图 Drawn By		

执业签章
Engineer Signature

出图签章
Engineer Signature

项目名称
Project Name

26m² PrefabX-SPD

图名

Contents

工程编号 Title	-	专业 Type	JZ
比例 Scale		图号 Dwg.No	J-000

未盖技术出图章 本图纸无效

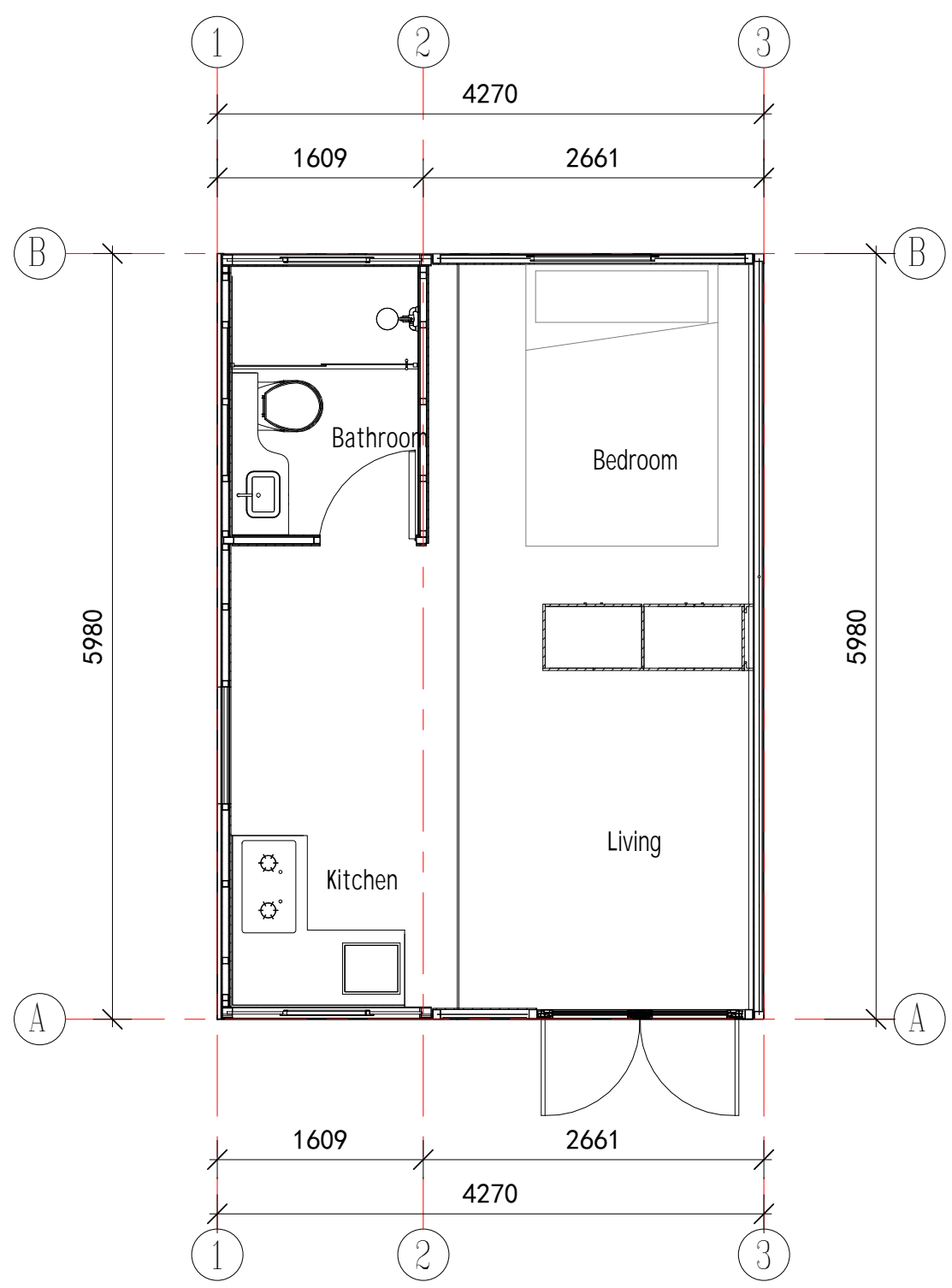
This drawing is valid only after being stamped and
checked by the client.

电力
暖通
动力

建筑
结构
给排水

会签

电力	暖通	动力
建筑	结构	给排水
会签		



Floor Plan

Design Specifications

- The building area of the house is 26m², one floor in total.
- The indoor height is 2.3m.

Floor

- 3 in total, applied 100*80 steel frame (Q335, wall thickness 2.5mm), the square tube is galvanized and sprayed with plastic.
- 0.426mm Colored Steel Sheet (Surface AZM100g/m²+PE coated 20/5um)+ Steel Frame + Filled with PU for insulation + 8mm PVC (Width 1200mm).
- R-Value: 27.7 ft²· hr· F/BTU.

Front and Back Wall of the General Kitchen and Bathroom Module

- 2 in total, applied 80*80 steel frame (Q335, wall thickness 2.5mm), the square tube is galvanized and sprayed with plastic.
- 7.5mm Plank (surface is brushed with 500g/m² wood oil)+ Steel Frame + 80mm PU + 9mm Bamboo and Wood Fiberboard (Width 600mm).
- R-Value: 22.66 ft²· hr· F/BTU.

Partition Wall of the General Kitchen and Bathroom Module

- 2 in total, applied 80*80 steel frame (Q355, wall thickness 2.5mm) the square tube is galvanized and sprayed with plastic.
- 27mm Craved Metal Board + 9mm OSB Board + Steel Frame + 50mm Glass Wool + 9mm OSB Board + 9mm Bamboo and Wood Fiberboard (Width 600mm).
- R-Value: 16.92 ft²· hr· F/BTU.

Ceiling Board

- 3 in total, applied 80*80 steel frame (Q355, wall thickness 2.5mm), the square tube is galvanized and sprayed with plastic.
- 0.426mm Colored Steel Sheet (Surface AZM100g/m²+PE coated 20/5um)+ Steel Frame +80mm PU + 9mm Bamboo and Wood Fiberboard (Width 600mm).
- R-Value: 22.43 ft²· hr· F/BTU.

Foldable Walls

- 6 in total, applied 75*68 (convex 18) frame (wall thickness 1.8mm), galvanized and sprayed with plastic.
- 27mm Craved Metal Board + Steel Frame +75mm PU + 9mm Bamboo and Wood Fiberboard (Width 600mm)
- R-Value: 26.18 ft²· hr· F/BTU.

Doors

- Aluminum Alloy Double Door
- Wooden Single Door with Steel Frame

Windows

- Aluminum Casement Window/Top-Hung Window

Furniture

- L-Shaped Cabinet (Floor Cabint included) *1
- Demanded Water Heater *1
- Closet *1

Sanitary

- Procelain Toilet *1
- Wash Bas i n *1
- Shower Room *1
- Bathroom Heat Lamp *1

Electricity

- China /America/Australia/Europe Standard Electricity + China Standrd Water Supply + Dome Light *10.

Copyright 2016.
 本图版权归浙江普天集成房屋有限公司所有，除本工程外对本图的任何用途和复制，必须获得本公司的书面许可。
 THE OWNERSHIP OF THE COPYRIGHT IN THIS DRAWING IS RETAINED BY ZHEJIANG PUTIAN INTEGRATED HOUSING CO.,LTD. WRITTEN CONSENT MUST BE OBTAINED BEFORE ANY USE OR REPRODUCTION OF THE DRAWING.

版本 Rev.	修改内容 Description	日期 Date	发布人 who send

PTH
 Zhejiang Putian integrated housing Co., Ltd.
 Hangzhou Zhongpu Architecture Design (institute) Co., Ltd.

证书等级	
证书编号	
合作设计单位 Cooperative Designer	

工序 Process	签名 Signature	日期 Date
审定 Authorized By		
审核 Verified By		
项目负责人 Process		
校对人 Checked By		
设计 Designed By		
制图 Drawn By		

执业签章
Engineer Signature

出图签章
Engineer Signature

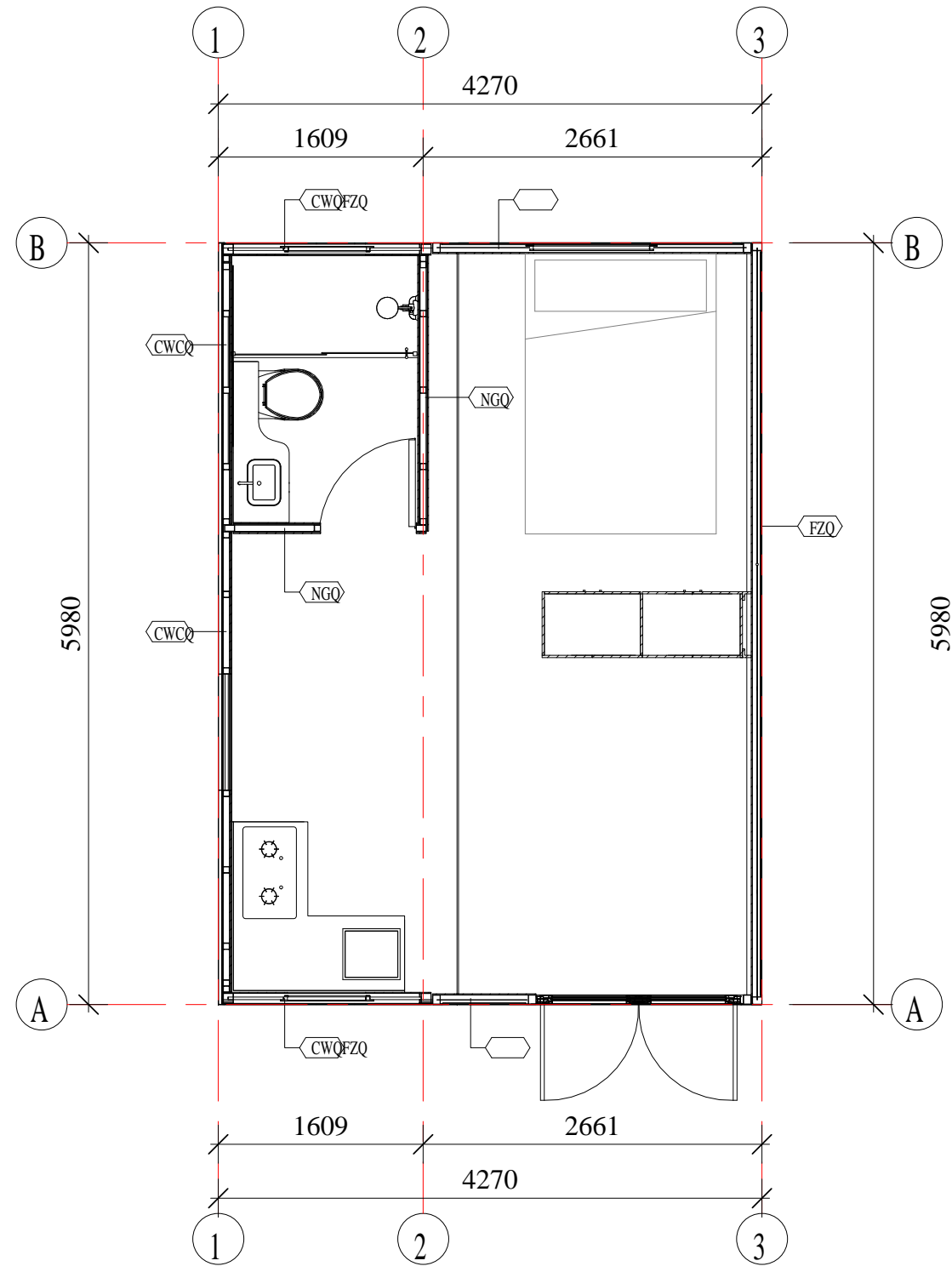
项目名称
Project Name
26m² PrefabX-SPD

图名
Design Description

工程编号 Title	-	专业 Type	JZ
比例 Scale		图号 Dwg No	J-101

未盖技术出图章 本图纸无效
 This drawing is valid only after being stamped and
 released by the office.

暖通	动力
电	力
结构	给排水
会	签



Detailed Layout Plan

Wall Legend

CWQ	7.5mm Plank (surface is brushed with 500g/m ² wood oil) + Steel Frame + 80mm PU + 9mm Bamboo and Wood Fiberboard (Width 600mm)
CWCQ	27mm Craved Metal Board + 9mm OSB Board + Steel Frame + 80mm PU + 9mm OSB Board + 9mm Bamboo and Wood Fiberboard (Width 600mm).
NGQ	9mm Bamboo and Wood Fiberboard (Width 600mm) + 9mm OSB Board + Steel Frame + 50mm Glass Wool + 9mm OSB Board + 9mm Bamboo and Wood Fiberboard (Width 600mm)
FZQ	27mm Craved Metal Board + Steel Frame + 75mm PU + 9mm Bamboo and Wood Fiberboard (Width 600mm).

Copyright 2016.
 本图版权归浙江中天集成房屋有限公司所有，除本工程外对本图的任何其它用途和复制
 必须取得该公司的书面许可。
 THE OWNERSHIP OF THE COPYRIGHT IN THIS DRAWING IS RETAINED BY
 ZHEJIANG PUTIAN INTEGRATED HOUSING CO.,LTD. WRITTEN CONSENT MUST BE
 OBTAINED BEFORE ANY USE OR REPRODUCTION OF THE DRAWING.

Rev.	修改内容 Description	日期 Date	发布人 who send
------	---------------------	------------	-----------------



Zhejiang Putian integrated housing Co.,Ltd.Hangzhou Zhongpu Architecture Design (institute)Co.,Ltd.

证书等	
级证书	
编号	
合作设计单位 Cooperative Designer	

工序 Process	签名 Signature	日期 Date
审定 Authorized By		
审核 Verified By		
项目负责人 Process		
校对 Checked By		
设计 Designed By		
制图 Drawn By		

执业签章
Engineer Signature

出图签章
Engineer Signature

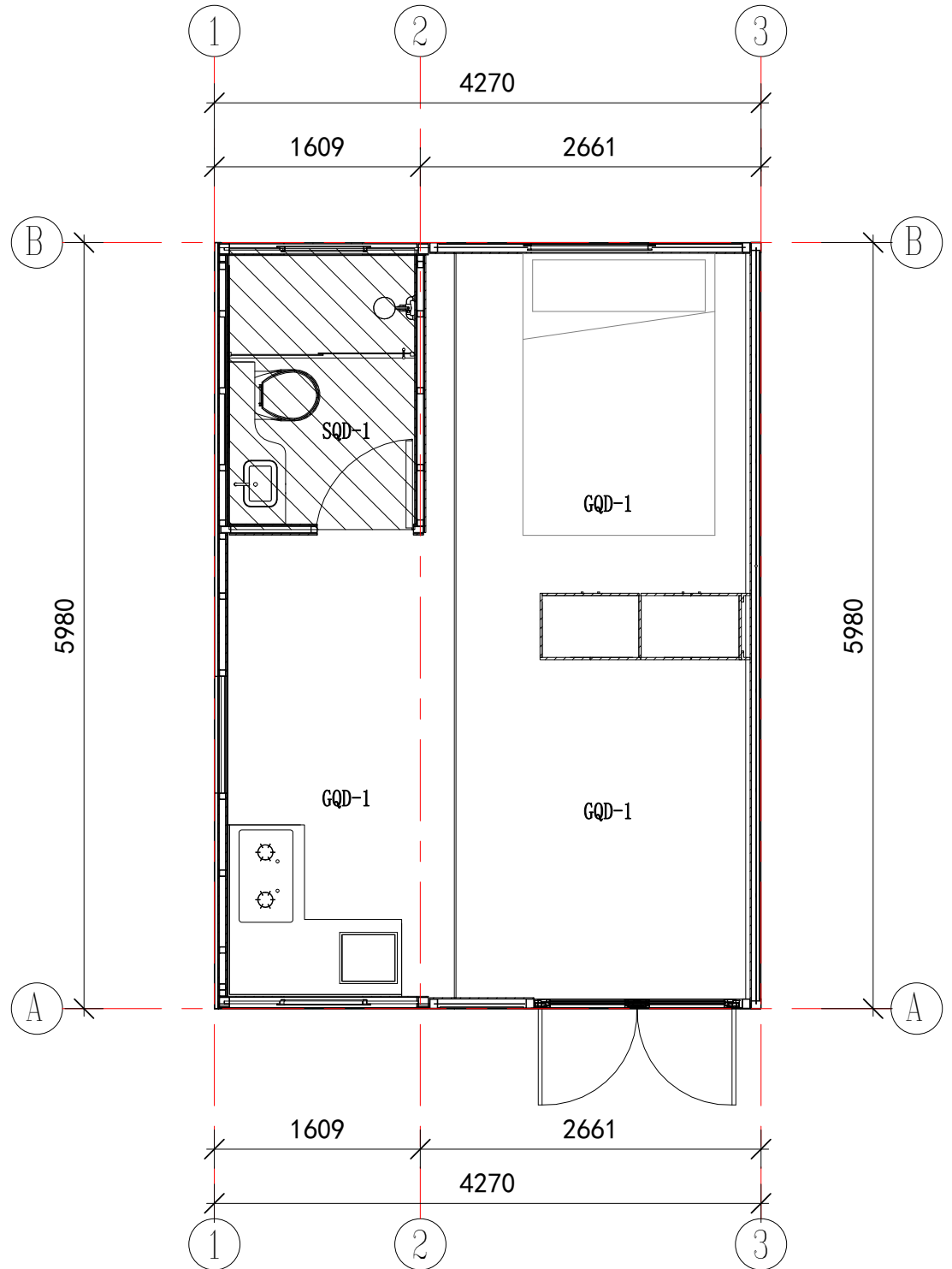
项目名称
Project Name
26m² PrefabX-SPD

图名
Title
Layout Plan

工程编号 Title	-	专业 Title	JZ
比例 Scale		图号 Dwg.No	

未盖技术出图章 本图纸无效
 This drawing is valid only after being stamped and released by the R&D

电力	暖通	动力
建筑	结构	给排水
会	签	



Ceiling Plan

注释

- GQD-1 Dry Zone Ceiling: 9mm Bamboo and Wood Fiberboard
- SQQ-1 Wet Zone Ceiling: Aluminum Alloy Integrated Ceiling Ceiling keel included)

Copyright 2016.
 本图版权归浙江中天集成房屋有限公司所有，除本工程外对本图的任何其它用途和复制，必须获得本公司的书面许可。
 THE OWNERSHIP OF THE COPYRIGHT IN THIS DRAWING IS RETAINED BY ZHEJIANG PUTIAN INTEGRATED HOUSING CO.,LTD. WRITTEN CONSENT MUST BE OBTAINED BEFORE ANY USE OR REPRODUCTION OF THE DRAWING.

版本 Rev.	修改内容 Description	日期 Date	发布人 who send
---------	------------------	---------	--------------



Zhejiang Putian integrated housing Co., Ltd.
 Hangzhou Zhongpu Architecture Design (institute) Co., Ltd.

证书等级	
证书编号	

合作设计单位
 Cooperative Designer

工序 Process	签名 Signature	日期 Date
审定 Authorized By		
审核 Verified By		
项目负责人 Process		
校对人 Checked By		
设计 Designed By		
制图 Drawn By		

执业签章
 Engineer Signature

出图签章
 Engineer Signature

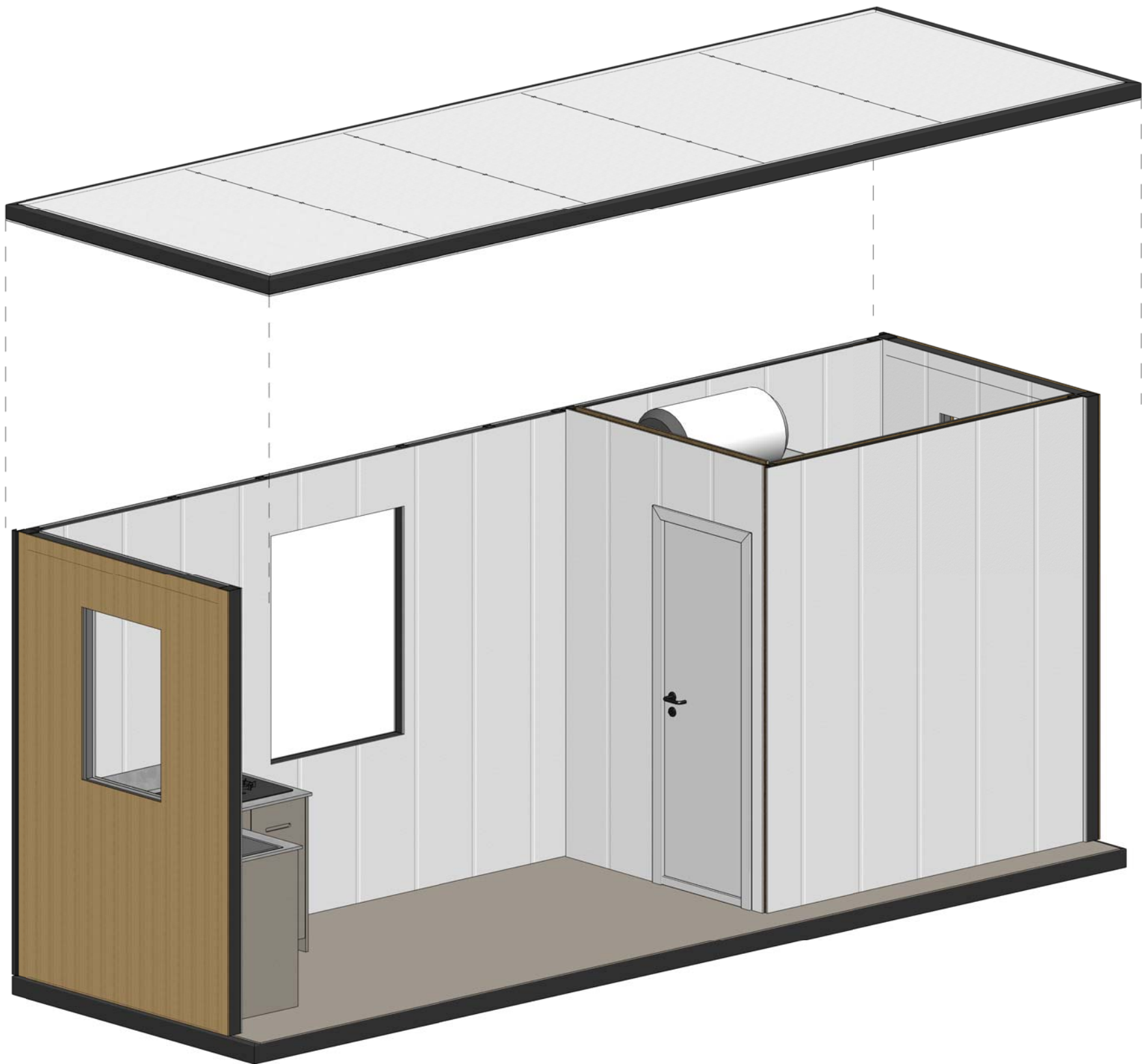
项目名称
 Project Name
 26m² PrefabX-SPD

图名
 Title
 Ceiling Plan

工程编号 No.	-	专业 Discipline	JZ
比例 Scale		图号 Drawing No.	J-103

未盖技术出图章 本图纸无效
 This drawing is valid only after being stamped and
 released by the PTH.

会签	建筑	电力
	结构	暖通
	给排水	动力



General Kitchen and Bathroom Module

Copyright 2016.

本图版权归浙江普天集成房屋有限公司所有，除本工程外对本图的任何其它用途和复制，必须获得本公司的书面许可。
THE OWNERSHIP OF THE COPYRIGHT IN THIS DRAWING IS RETAINED BY ZHEJIANG PUTIAN INTEGRATED HOUSING CO.,LTD. WRITTEN CONSENT MUST BE OBTAINED BEFORE ANY USE OR REPRODUCTION OF THE DRAWING.

版本 Rev.	修改内容 Description	日期 Date	发布人 who send
------------	---------------------	------------	-----------------



Zhejiang Putian integrated housing Co., Ltd.
Hangzhou Zhongpu Architecture Design (institute) Co., Ltd.

证书等级

证书编号

合作设计单位
Cooperative Designer

工序 Process	签名 Signature	日期 Date
审定 Authorized By		
审核 Verified By		
项目负责人 Process		
校对人 Checked By		
设计 Designed By		
制图 Drawn By		

执业签章
Engineer Signature

出图签章
Engineer Signature

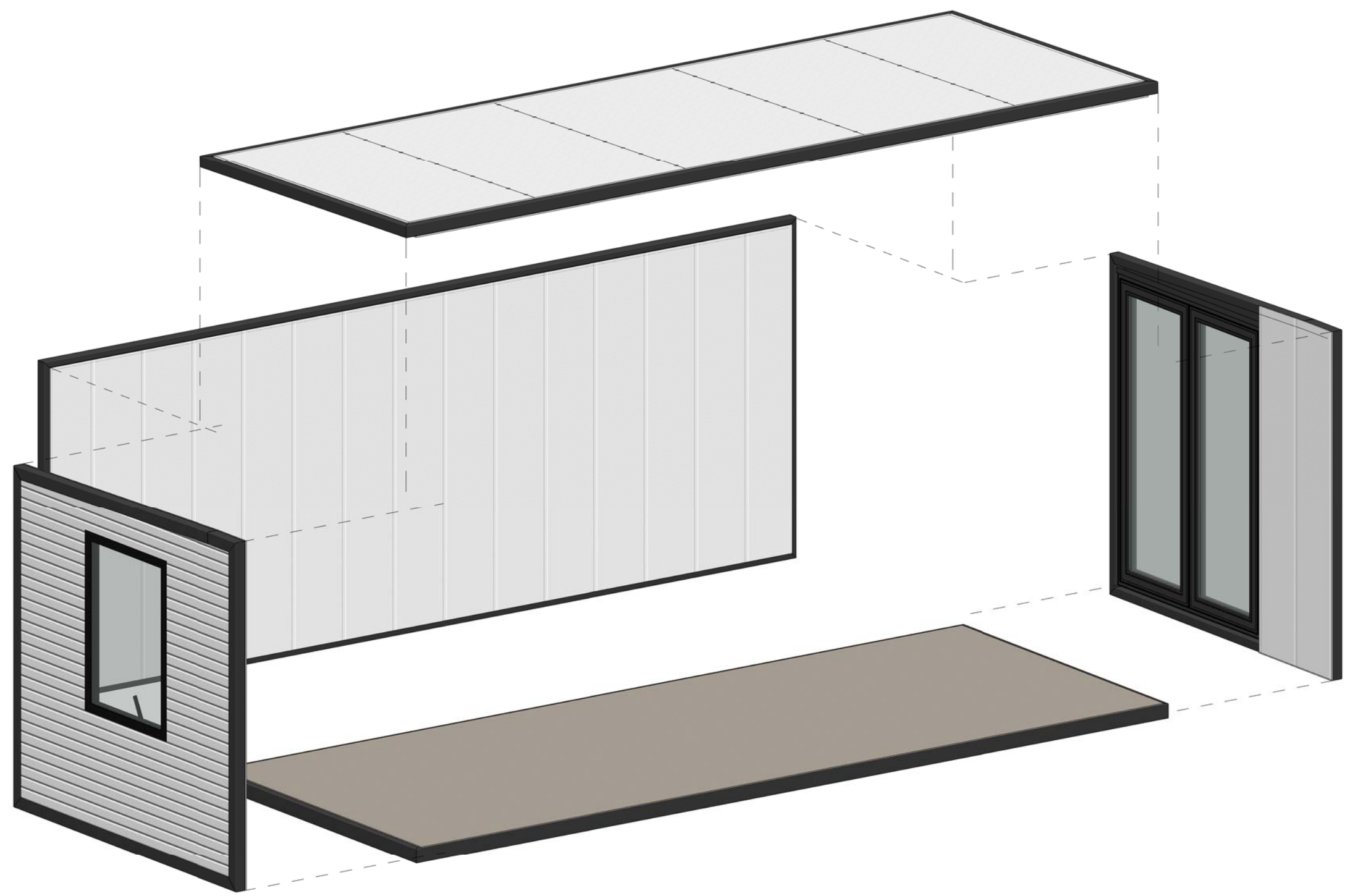
项目名称
Project Name
26m² PrefabX-SPD

图名
General Kitchen and Bathroom Module

工程编号 Title	-	专业 Type	JZ
比例 Scale		图号 Dwg. No.	J-104

未盖技术出图章 本图纸无效
This drawing is valid only after being stamped and
released by the client.

会签	建筑	电力
给排水	结构	暖通
		动力



Foldable Module
2 in total, 1 on each side

Copyright 2016.
 本图版权归浙江普天集成房屋有限公司所有，除本工程外对本图的任何其它用途和复制，
 必须获得本公司的书面许可。
 THE OWNERSHIP OF THE COPYRIGHT IN THIS DRAWING IS RETAINED BY
 ZHEJIANG PUTIAN INTEGRATED HOUSING CO.,LTD. WRITTEN CONSENT MUST BE
 OBTAINED BEFORE ANY USE OR REPRODUCTION OF THE DRAWING.

版本 Rev.	修改内容 Description	日期 Date	发布人 who send
------------	---------------------	------------	-----------------

PTH
 Zhejiang Putian integrated housing Co., Ltd.
 Hangzhou Zhongpu Architecture Design (institute) Co., Ltd.

证书等级
 证书编号

合作设计单位
 Cooperative Designer

工序 Process	签名 Signature	日期 Date
审定 Authorized By		
审核 Verified By		
项目负责人 Process		
校对人 Checked By		
设计 Designed By		
制图 Drawn By		

执业签章
 Engineer Signature

出图签章
 Engineer Signature

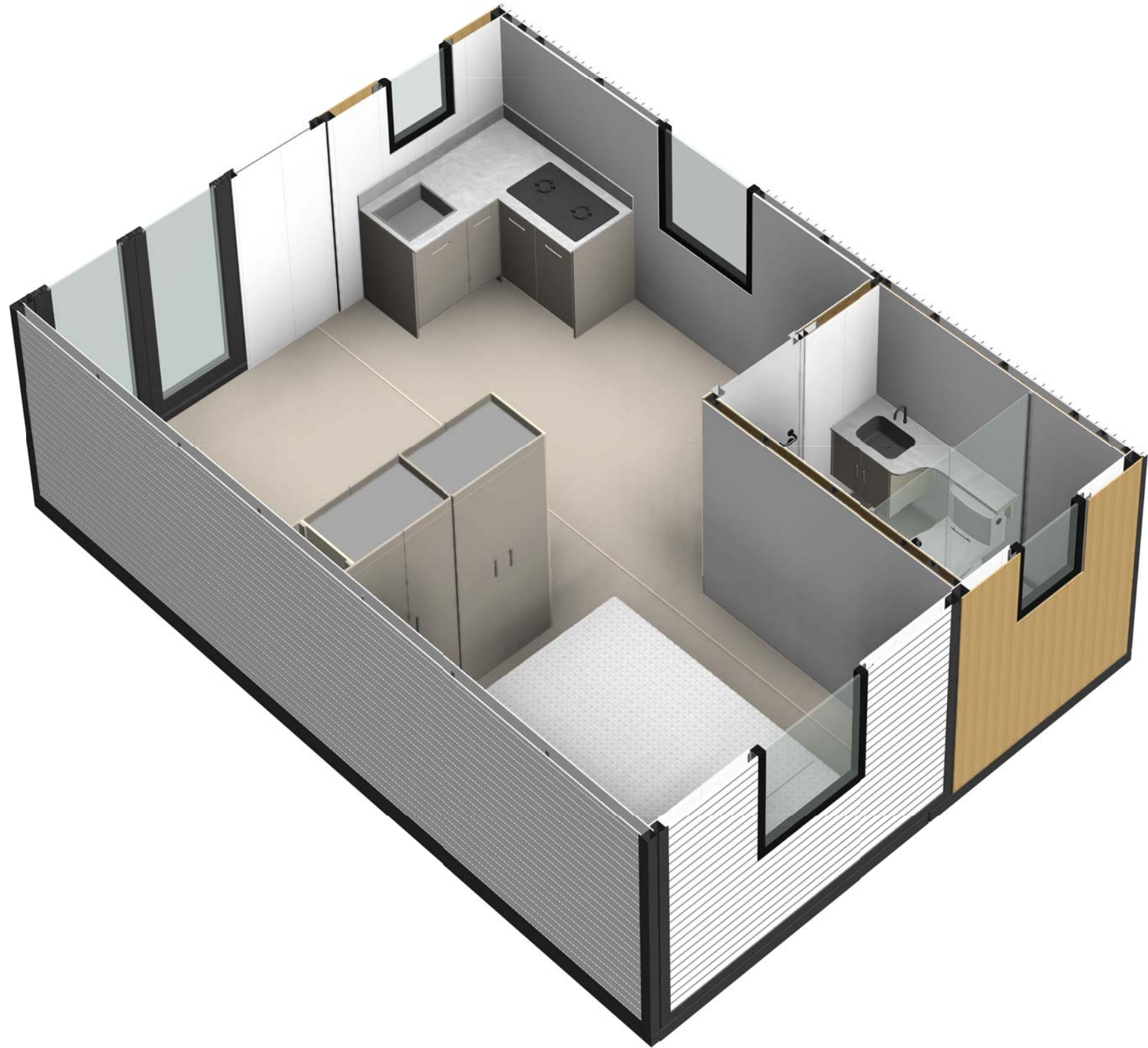
项目名称
 Project Name
26m² PrefabX-SPD

图名
Foldable Module

工程编号 Title	-	专业 Type	JZ
比例 Dwg.No		图号 Dwg.No	J-105

未盖技术出图章 本图纸无效
 This drawing is valid only after being stamped and
 released by the client.

会签	建筑	电力
给排水	结构	暖通
		动力



Copyright 2016.

本图版权归浙江普天集成房屋有限公司所有，除本工程外对本图的任何其它用途和复制，必须获得本公司的书面许可。
THE OWNERSHIP OF THE COPYRIGHT IN THIS DRAWING IS RETAINED BY ZHEJIANG PUTIAN INTEGRATED HOUSING CO.,LTD. WRITTEN CONSENT MUST BE OBTAINED BEFORE ANY USE OR REPRODUCTION OF THE DRAWING.

版本 Rev.	修改内容 Description	日期 Date	发布人 who send
------------	---------------------	------------	-----------------



Zhejiang Putian integrated housing Co., Ltd.
Hangzhou Zhongpu Architecture Design (institute) Co., Ltd.

证书等级	
证书编号	

合作设计单位
Cooperative Designer

工序 Process	签名 Signature	日期 Date
审定 Authorized By		
审核 Verified By		
项目负责人 Process		
校对人 Checked By		
设计 Designed By		
制图 Drawn By		

执业签章
Engineer Signature

出图签章
Engineer Signature

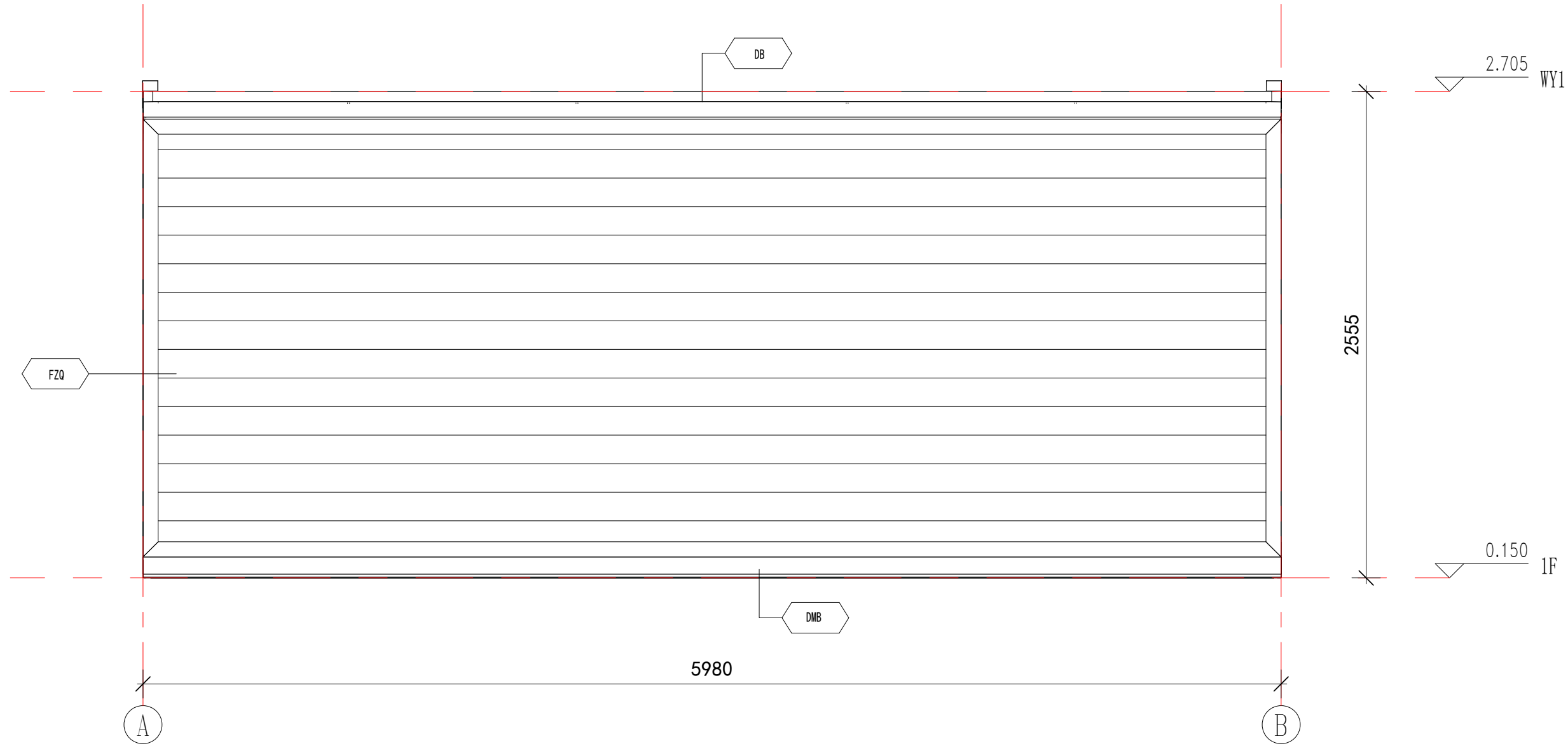
项目名称
Project Name
26m² PrefabX-SPD

图名
Title
3D Section View

工程编号 Title	-	专业 Type	JZ
比例 Scale		图号 Drawing No.	J-106

未盖技术出图章 本图纸无效
This drawing is valid only after being stamped and
checked by the client.

电力	暖通	动力
建筑	结构	给排水
会	签	



East Elevation Layout

Annotation

DB	0.426mm Colored Steel Sheet (Surface AZM100g/m ² +PE coated 20/5um) + Steel Frame + 80mm PU + 9mm Bamboo and Wood Fiberboard (Width 600mm).
DMB	0.426mm Colored Steel Sheet (Surface AZM100g/m ² +PE coated 20/5um) + Steel Frame + Filled with PU for insulation + 8mm PVC (Width 1200mm)
FZQ	27mm Craved Metal Board + Steel Frame +75mm PU + 9mm Bamboo and Wood Fiberboard (Width 600mm)

Copyright 2016.

本图版权归浙江普天集成房屋有限公司所有，除本工程外对本图的任何其它用途和复制，必须获得本公司的书面许可。
THE OWNERSHIP OF THE COPYRIGHT IN THIS DRAWING IS RETAINED BY ZHEJIANG PUTIAN INTEGRATED HOUSING CO.,LTD. WRITTEN CONSENT MUST BE OBTAINED BEFORE ANY USE OR REPRODUCTION OF THE DRAWING.

版本 Rev.	修改内容 Description	日期 Date	发布人 who send
---------	------------------	---------	--------------



Zhejiang Putian integrated housing Co., Ltd.
Hangzhou Zhongpu Architecture Design (institute) Co., Ltd.

证书等级

证书编号

合作设计单位
Cooperative Designer

工序 Process	签名 Signature	日期 Date
------------	--------------	---------

审定 Authorized By		
------------------	--	--

审核 Verified By		
----------------	--	--

项目负责人 Process		
---------------	--	--

校对人 Checked By		
----------------	--	--

设计 Designed By		
----------------	--	--

制图 Drawn By		
-------------	--	--

执业签章
Engineer Signature

出图签章
Engineer Signature

项目名称
Project Name

26m² PrefabX-SPD

图名

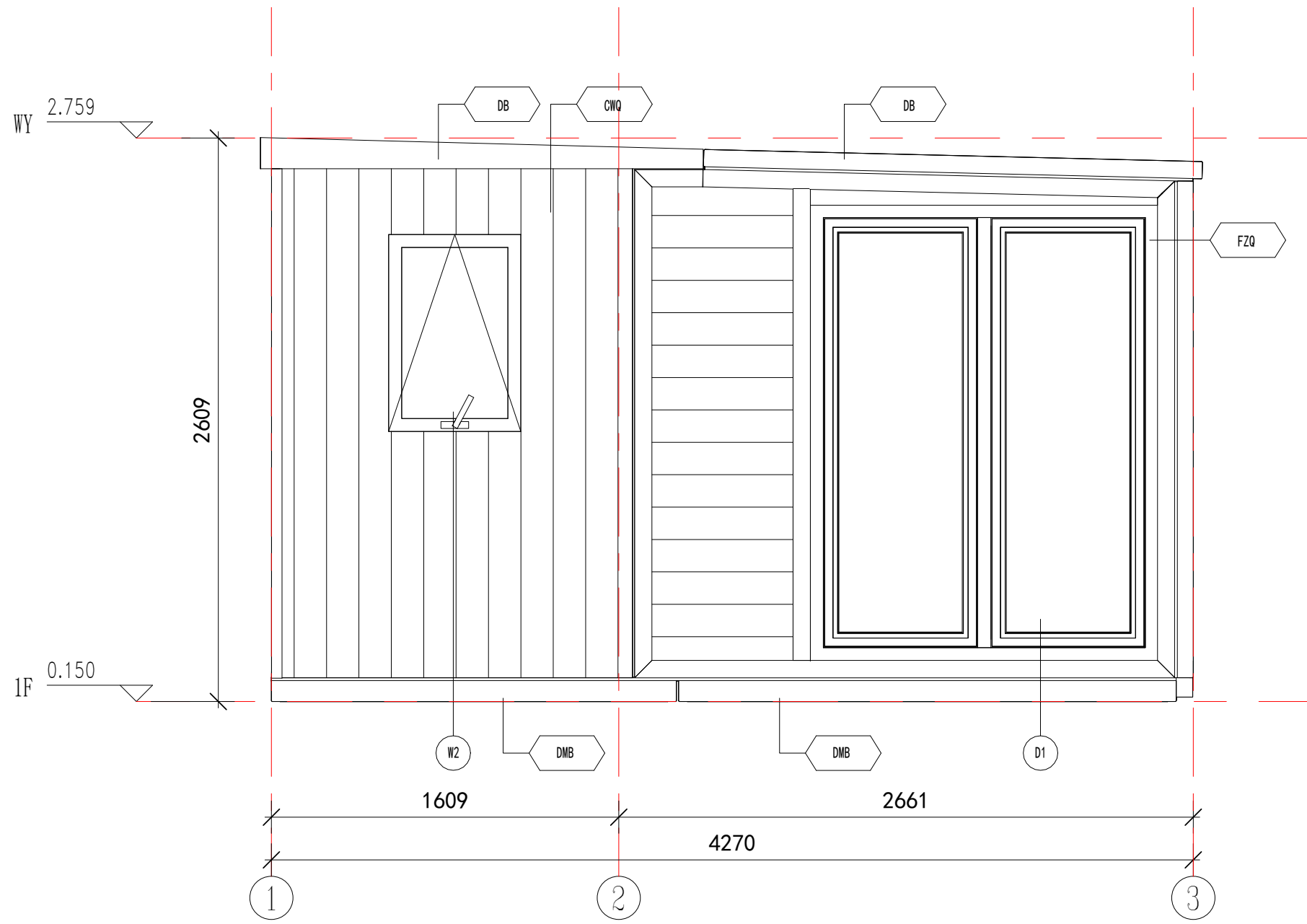
East Elevation Layout

工程编号 Title	-	专业 Type	JZ
---------------	---	------------	----

比例 Scale		图号 Dwg. No.	J-201
-------------	--	----------------	-------

未盖技术出图章 本图纸无效
This drawing is valid only after being stamped and

电力	暖通	动力
建筑	结构	给排水
会签		



South Elevation Layout

Annotation

DB	0.426mm Colored Steel Sheet (Surface AZM100g/m ² +PE coated 20/5um) + Steel Frame +80mm PU + 9mm Bamboo and Wood Fiberboard (Width 600mm)
DMB	0.426mm Colored Steel Sheet (Surface AZM100g/m ² +PE coated 20/5um)+ Steel Frame + Filled with PU for insulation + 8mm PVC (Width 1200mm)
FZQ	27mm Craved Metal Board + Steel Frame +75mm PU + 9mm Bamboo and Wood Fiberboard (Width 600mm)
CWQ	7.5mm Plank (surface is brushed with 500g/m ² wood oil) + Steel Frame + 80mm PU + 9mm Bamboo and Wood Fiberboard (Width 600mm)

Copyright 2016.

本图版权归浙江普天集成房屋有限公司所有，除本工程外对本图的任何其它用途和复制，必须获得本公司的书面许可。
THE OWNERSHIP OF THE COPYRIGHT IN THIS DRAWING IS RETAINED BY ZHEJIANG PUTIAN INTEGRATED HOUSING CO.,LTD. WRITTEN CONSENT MUST BE OBTAINED BEFORE ANY USE OR REPRODUCTION OF THE DRAWING.

版本 Rev.	修改内容 Description	日期 Date	发布人 who send
---------	------------------	---------	--------------



Zhejiang Putian integrated housing Co., Ltd.
Hangzhou Zhongpu Architecture Design (institute) Co., Ltd.

证书等级	
证书编号	
合作设计单位 Cooperative Designer	

工序 Process	签名 Signature	日期 Date
审定 Authorized By		
审核 Verified By		
项目负责人 Process		
校对人对人 Checked By		
设计 Design By		
制图 Drawn By		

执业签章
Engineer Signature

出图签章
Engineer Signature

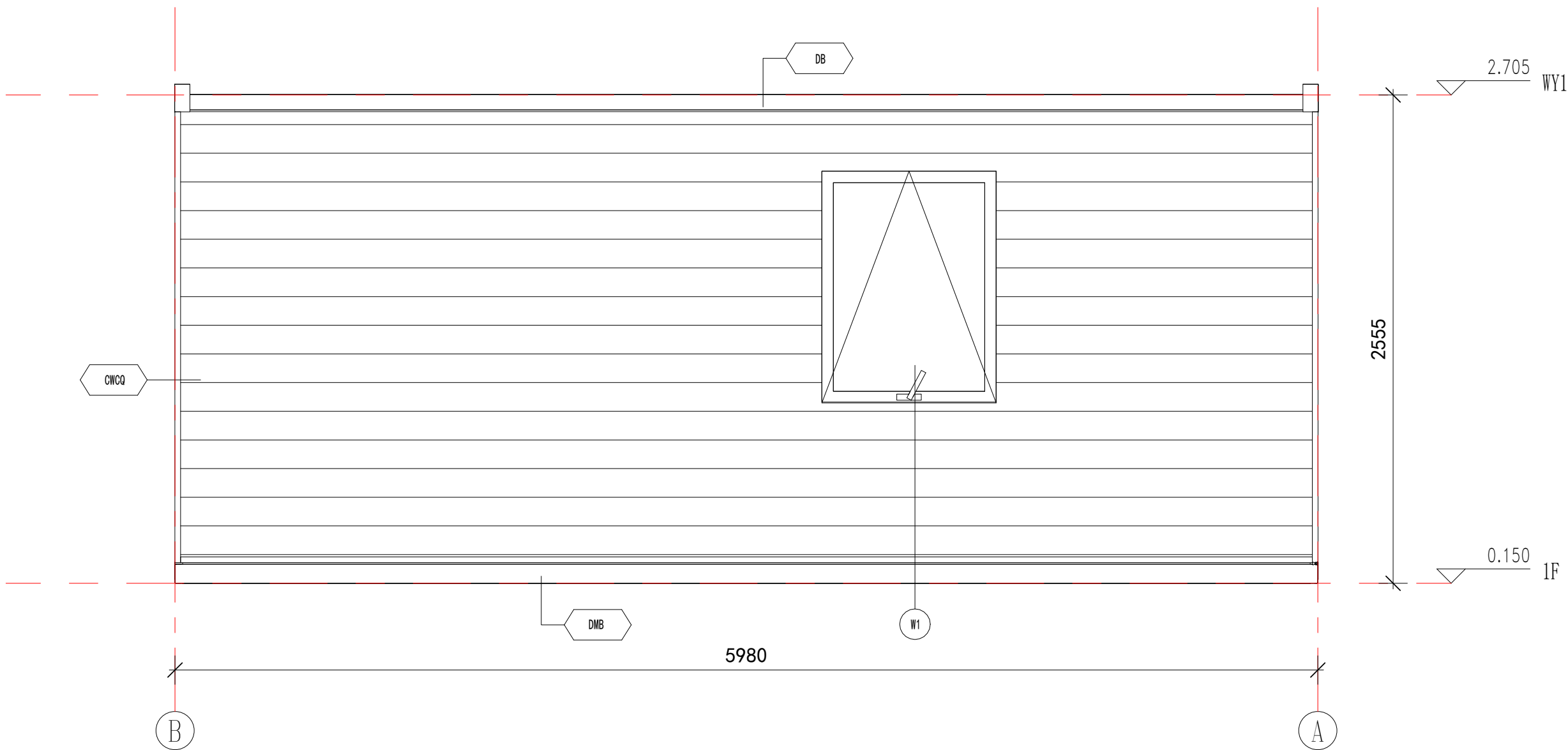
项目名称
Project Name
26m² PrefabX-SPD

图名
Title
South Elevation Layout

工程编号 Title	-	专业 Discipline	JZ
比例 Scale		图号 Drawing No.	J-202

未盖技术出图章 本图纸无效
This drawing is valid only after being stamped and
released by the PTH.

电力	暖通	动力
建筑	结构	给排水
会签		



West Elevation Layout

Annotation

DB	0.426mm Colored Steel Sheet (Surface AZM100g/m ² +PE coated 20/5um) + Steel Frame +80mm PU + 9mm Bamboo and Wood Fiberboard (Width 600mm)
DMB	0.426mm Colored Steel Sheet (Surface AZM100g/m ² +PE coated 20/5um)+ Steel Frame + Filled with PU for insulation + 8mm PVC (Width 1200mm)
CWCQ	27mm Craved Metal Board + 9mm OSB Board + Steel Frame + 50mm Glass Wool + 9mm OSB Board + 9mm Bamboo and Wood Fiberboard (Width 600mm)

Copyright 2016.

本图版权归浙江中天集成房屋有限公司所有，除本工程外对本图的任何其它用途和复制，必须获得本公司的书面许可。
THE OWNERSHIP OF THE COPYRIGHT IN THIS DRAWING IS RETAINED BY ZHEJIANG PUTIAN INTEGRATED HOUSING CO.,LTD. WRITTEN CONSENT MUST BE OBTAINED BEFORE ANY USE OR REPRODUCTION OF THE DRAWING.

版本 Rev.	修改内容 Description	日期 Date	发布人 who send
------------	---------------------	------------	-----------------



Zhejiang Putian integrated housing Co., Ltd.
Hangzhou Zhongpu Architecture Design (institute) Co., Ltd.

证书等级	
证书编号	

合作设计单位
Cooperative Designer

工序 Process	签名 Signature	日期 Date
审定 Authorized By		
审核 Verified By		
项目负责人 Process		
校对人 Checked By		
设计 Designed By		
制图 Drawn By		

执业签章
Engineer Signature

出图签章
Engineer Signature

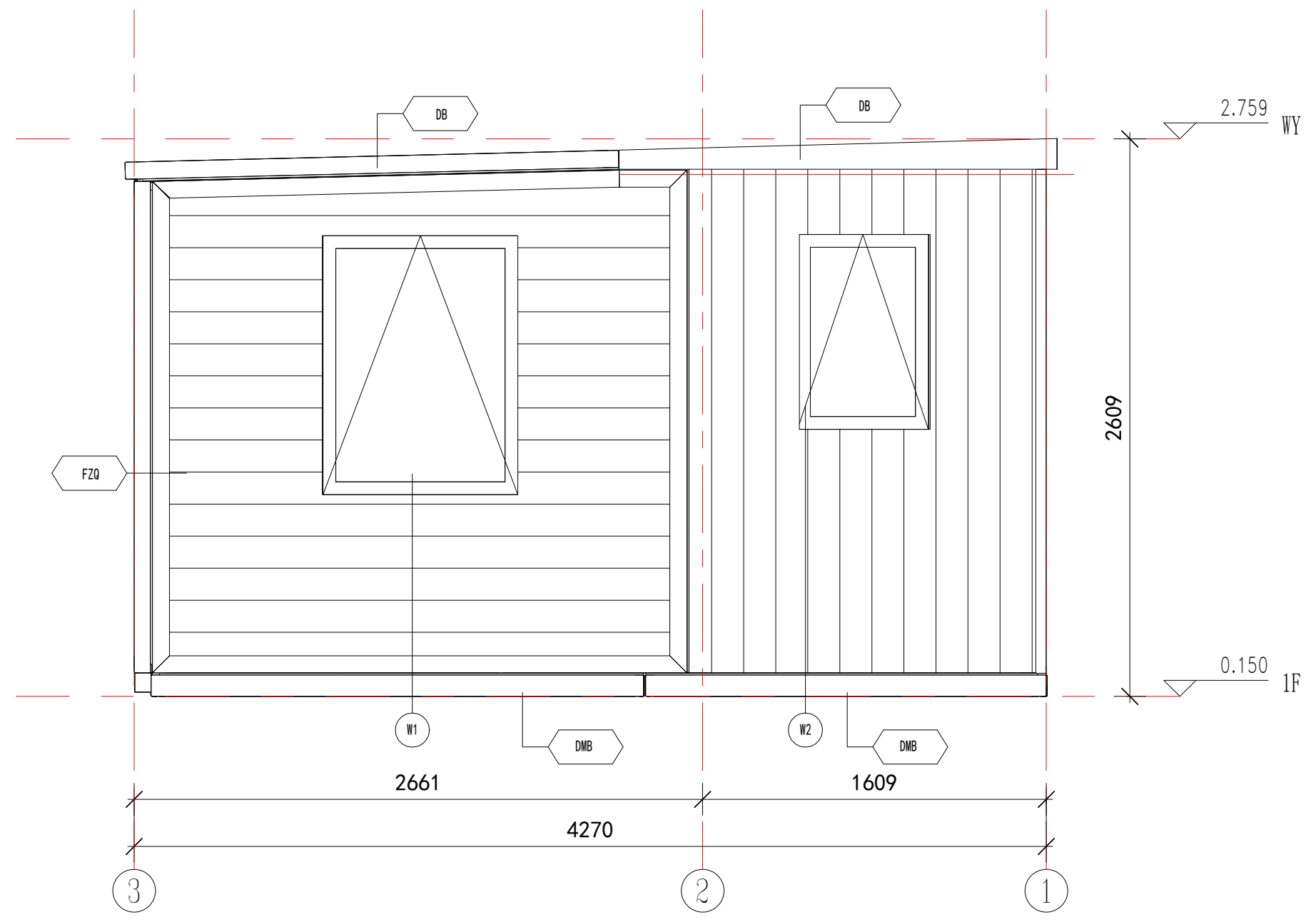
项目名称
Project Name
26m² PrefabX-SPD

图名
Title
West Elevation Layout

工程编号 Title	-	专业 Type	JZ
比例 Scale		图号 Drawing No.	J-203

未盖技术出图章 本图纸无效
This drawing is valid only after being stamped and
released by the office.

电力	暖通	动力
建筑	结构	给排水
会	签	



North Elevation Layout

Annotation

DB	0.426mm Colored Steel Sheet (Surface AZM100g/m ² +PE coated 20/5um) + Steel Frame +80mm PU + 9mm Bamboo and Wood Fiberboard (Width 600mm)
DMB	0.426mm Colored Steel Sheet (Surface AZM100g/m ² +PE coated 20/5um) + Steel Frame + Filled with PU for insulation + 8mm PVC (Width 1200mm)
FZQ	27mm Craved Metal Board + Steel Frame +75mm PU + 9mm Bamboo and Wood Fiberboard (Width 600mm)
CWQ	7.5mm Plank (surface is brushed with 500g/m ² wood oil) + Steel Frame + 80mm PU + 9mm Bamboo and Wood Fiberboard (Width 600mm)

Copyright 2016.
 本图版权归浙江普天集成房屋有限公司所有，除本工程外对本图的任何其它用途和复制，必须获得本公司的书面许可。
 THE OWNERSHIP OF THE COPYRIGHT IN THIS DRAWING IS RETAINED BY ZHEJIANG PUTIAN INTEGRATED HOUSING CO.,LTD. WRITTEN CONSENT MUST BE OBTAINED BEFORE ANY USE OR REPRODUCTION OF THE DRAWING.

版本 Rev.	修改内容 Description	日期 Date	发布人 who send
---------	------------------	---------	--------------



Zhejiang Putian integrated housing Co., Ltd.
 Hangzhou Zhongpu Architecture Design (institute) Co., Ltd.

证书等级	
证书编号	
合作设计单位 Cooperative Designer	

工序 Process	签名 Signature	日期 Date
审定 Authorized By		
审核 Verified By		
项目负责人 Process		
校对人 Checked By		
设计 Designed By		
制图 Drawn By		

执业签章
Engineer Signature

出图签章
Engineer Signature

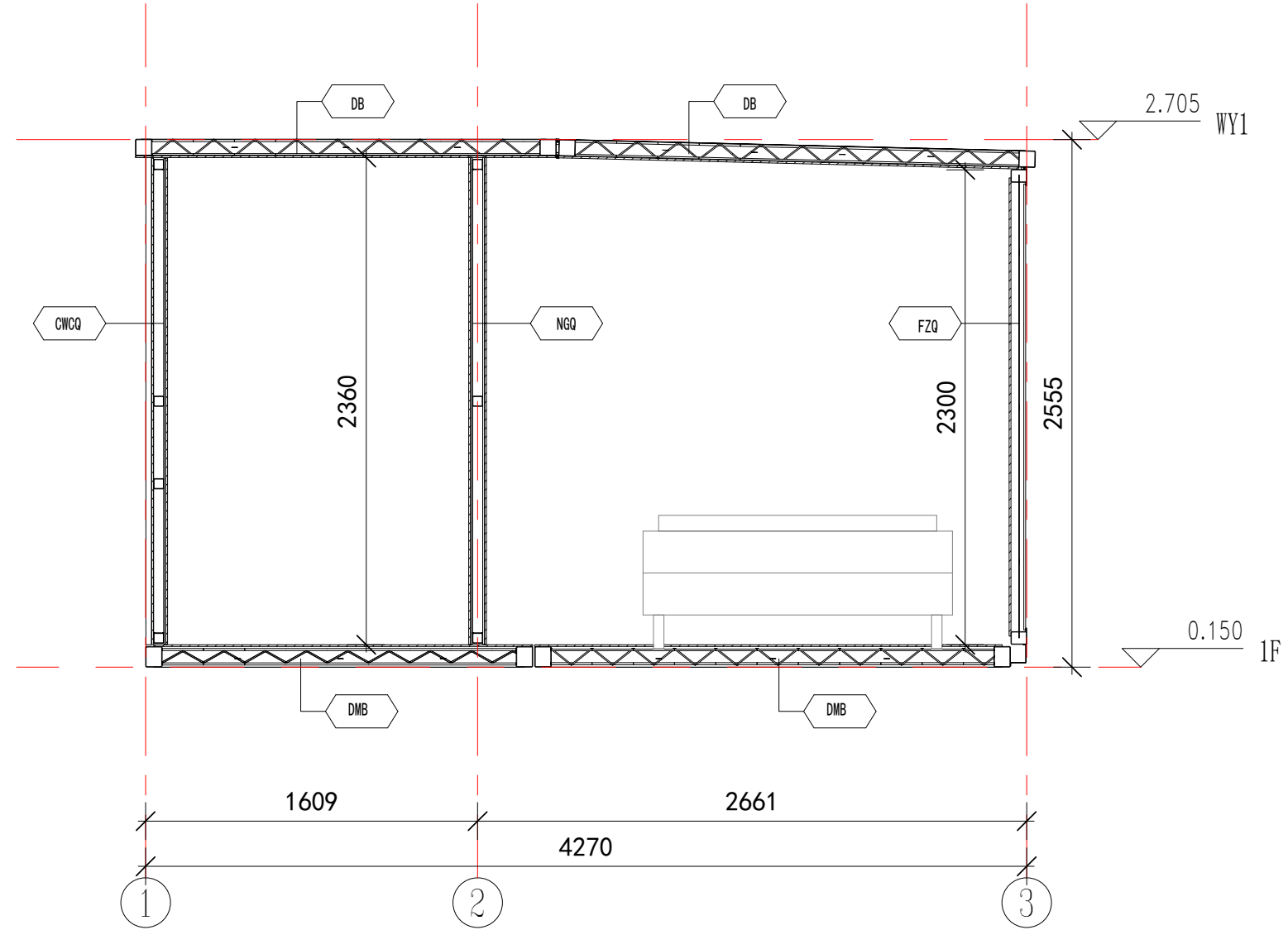
项目名称
Project Name
26m² PrefabX-SPD

图名
Title
North Elevation Layout

工程编号 Title	-	专业 Type	JZ
比例 Scale		图号 Drawing No.	J-204

未盖技术出图章 本图纸无效
 This drawing is valid only after being stamped and
 released by the PTH.

电力	暖通	动力
建筑	结构	给排水
会	签	



Architectural Section

Annotation

DB	0.426mm Colored Steel Sheet (Surface AZM100g/m ² +PE coated 20/5um) + Steel Frame +80mm PU + 9mm Bamboo and Wood Fiberboard (Width 600mm)
DMB	0.426mm Colored Steel Sheet (Surface AZM100g/m ² +PE coated 20/5um) + Steel Frame + Filled with PU for insulation + 8mm PVC (Width 1200mm)
FZQ	27mm Craved Metal Board + Steel Frame +75mm PU + 9mm Bamboo and Wood Fiberboard (Width 600mm)
NGQ	9mm Bamboo and Wood Fiberboard (Width 600mm)+ 9mm OSB Board + Steel Frame + 50mm Glass Wool + 9mm OSB Board + 9mm Bamboo and Wood Fiberboard (Width 600mm)
CWCQ	27mm Craved Metal Board + 9mm OSB Board + Steel Frame + 50mm Glass Wool + 9mm OSB Board + 9mm Bamboo and Wood Fiberboard (Width 600mm)

Copyright 2016.

本图版权归浙江普天集成房屋有限公司所有，除本工程外对本图的任何其它用途和复制，必须获得本公司的书面许可。
THE OWNERSHIP OF THE COPYRIGHT IN THIS DRAWING IS RETAINED BY ZHEJIANG PUTIAN INTEGRATED HOUSING CO.,LTD. WRITTEN CONSENT MUST BE OBTAINED BEFORE ANY USE OR REPRODUCTION OF THE DRAWING.

版本 Rev.	修改内容 Description	日期 Date	发布人 who send
---------	------------------	---------	--------------



Zhejiang Putian integrated housing Co., Ltd.
Hangzhou Zhongpu Architecture Design (institute) Co., Ltd.

证书等级

证书编号

合作设计单位
Cooperative Designer

工序 Process	签名 Signature	日期 Date
------------	--------------	---------

审定 Authorized By		
------------------	--	--

审核 Verified By		
----------------	--	--

项目负责人 Process		
---------------	--	--

校对人 Checked By		
----------------	--	--

设计 Designed By		
----------------	--	--

制图 Drawn By		
-------------	--	--

执业签章
Engineer Signature

出图签章
Engineer Signature

项目名称
Project Name
26m² PrefabX-SPD

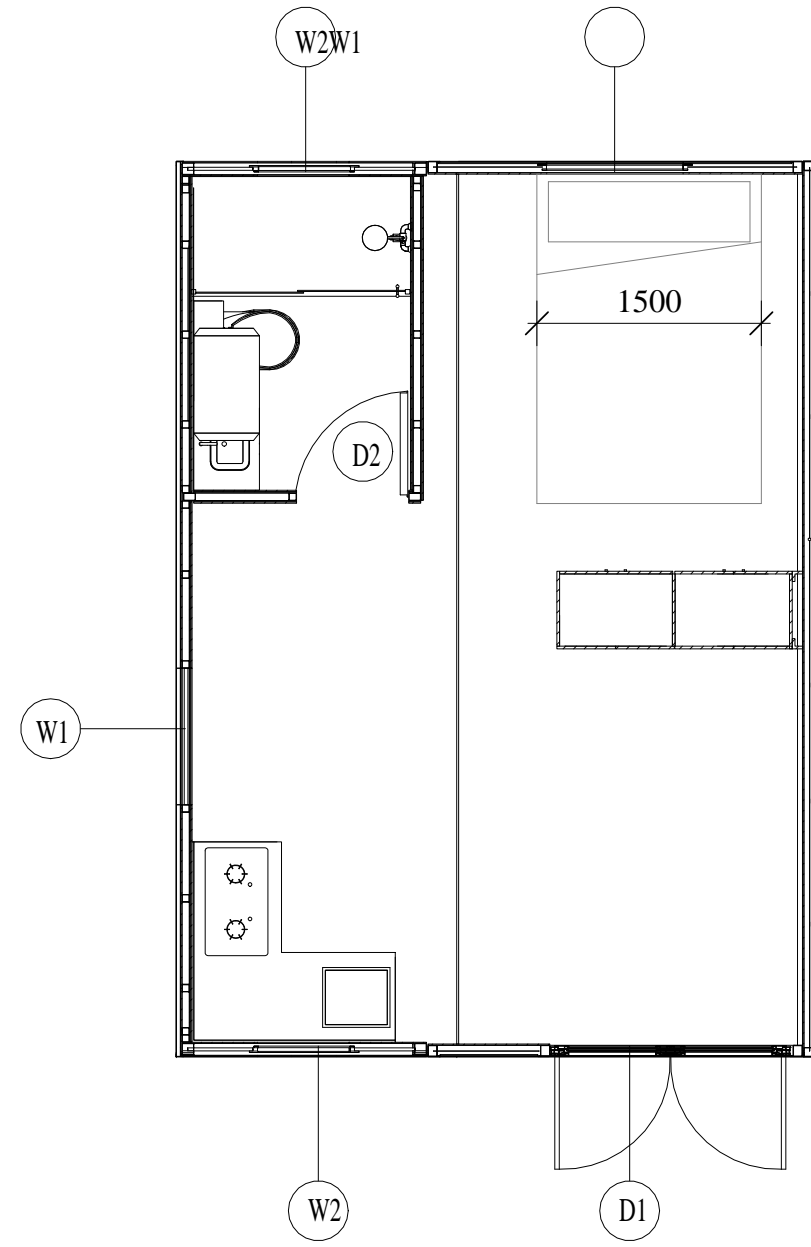
图名
Architectural Section

工程编号 Title	-	专业 Type	JZ
---------------	---	------------	----

比例 Scale		图号 Drawing No.	J-205
-------------	--	-------------------	-------

未盖技术出图章 本图纸无效
This drawing is valid only after being stamped and
released by the office.

会 建 筑 电 力
 结 构 暖 通
 签 章 排 版 动 力



Doors and Windows Layout

List of Windows

Serial Number	Name	Height	Width	Ground Height	HH	Frame color of Door/Window	Quantity
D1	Aluminum Alloy Double Glass Double Door	2100mm	1600mm	196mm	2296mm	Black	1
D2	Wooden Door with Steel Frame	2000mm	750mm	110mm	2110mm	White	1
W1	Aluminum Alloy Double Glass Top-Hung Window	1200mm	900mm	950mm	2150mm	Black	4
W1	Aluminum Alloy Double Glass Top-Hung Window	900mm	600mm	1250mm	2150mm	Black	2

Copyright 2016.

本图版权归浙江中天集成房屋有限公司所有，除本工程外对本图的任何其它用途和复制，必须获得本公司的书面许可。
 THE OWNERSHIP OF THE COPYRIGHT IN THIS DRAWING IS RETAINED BY ZHEJIANG PUTIAN INTEGRATED HOUSING CO.,LTD. WRITTEN CONSENT MUST BE OBTAINED BEFORE ANY USE OR REPRODUCTION OF THE DRAWING.

版本 Rev.	修改内容 Description	日期 Date	发布人 who send



Zhejiang Putian integrated housing Co.,Ltd.Hangzhou Zhongpu Architecture Design (institute)Co.,Ltd.

证书等	
级证书	
编号	
合作设计单位 Cooperative Designer	

工序 Process	签名 Signature	日期 Date
审定 Authorized By		
审核 Verified By		
项目负责人 Process		
校对人 Checked By		
设计 Designed By		
制图 Drawn By		

执业签章
Engineer Signature

出图签章
Engineer Signature

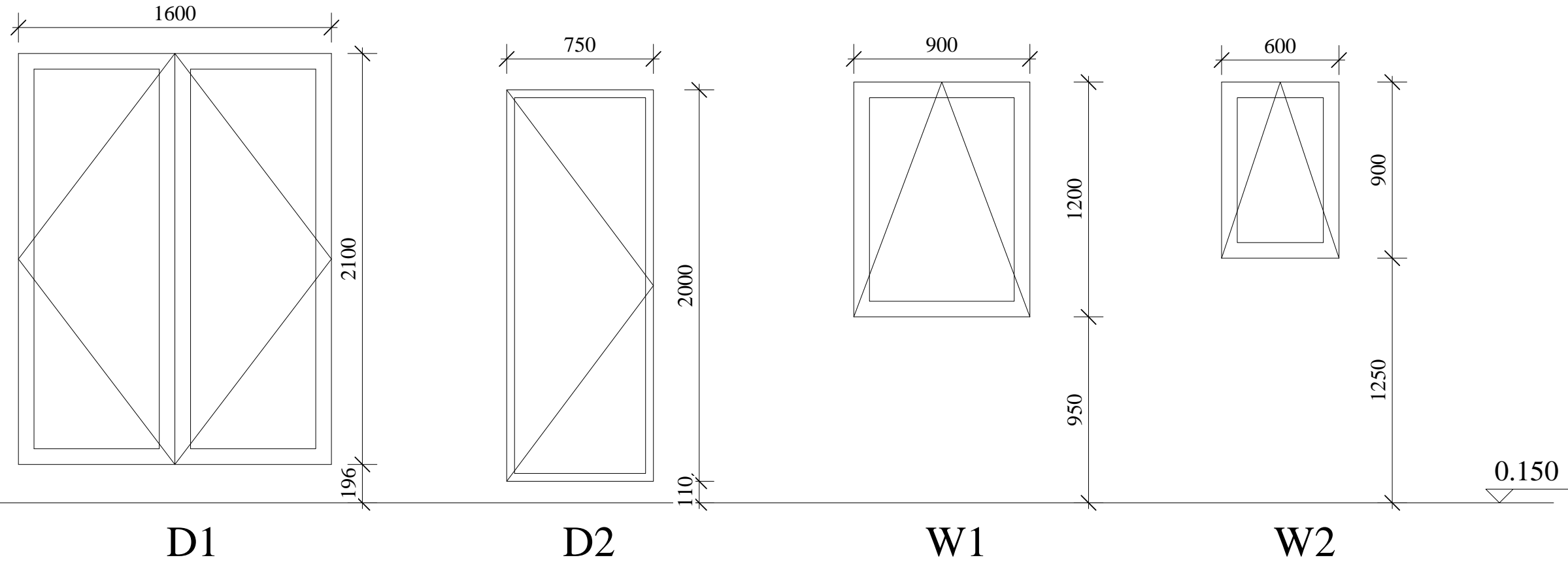
项目名称
Project Name
26m² PrefabX-SPD

图名
Title
Doors and Windows Layout

工程编号 Title	-	专业 Title	JZ
比例 Scale		图号 Dep.No	

未盖技术出图章 本图纸无效
 This drawing is valid only after being stamped and released by the R&D

会签	建筑	电力	暖通	动力
结构	给排水			



Facade of Doors and Windows

List of Windows

Serial Number	Name	Height	Width	Ground Height	HH	Frame Color of Door/Window	Quantity
D1	Aluminum Alloy Double Glass Double Door	2100mm	1600mm	196mm	2296mm	Black	1
D2	Wooden Door with Steel Frame	2000mm	750mm	110mm	2110mm	White	1
W1	Aluminum Alloy Double Glass Top-Hung Window	1200mm	900mm	950mm	2150mm	Black	4
W1	Aluminum Alloy Double Glass Top-Hung Window	900mm	600mm	1250mm	2150mm	Black	2

List of Doors and Windows

Copyright 2016.
 本图版权归浙江中天集成房屋有限公司所有，除本工程外对本图的任何其它用途和复制，必须取得本公司的书面许可。
 THE OWNERSHIP OF THE COPYRIGHT IN THIS DRAWING IS RETAINED BY ZHEJIANG PUTIAN INTEGRATED HOUSING CO.,LTD. WRITTEN CONSENT MUST BE OBTAINED BEFORE ANY USE OR REPRODUCTION OF THE DRAWING.

版本 Rev.	修改内容 Description	日期 Date	发布人 who send
---------	------------------	---------	--------------



Zhejiang Putian integrated housing Co.,Ltd.Hangzhou Zhongpu Architecture Design (institute)Co.,Ltd.

证书等	
级证书	
编号	
合作设计单位	
Cooperative Designer	

工序 Process	签名 Signature	日期 Date
审定 Authorized By		
审核 Verified By		
项目负责人 Process		
校对人 Checked By		
设计 Designed By		
制图 Drawn By		

执业签章
 Engineer Signature

出图签章
 Engineer Signature

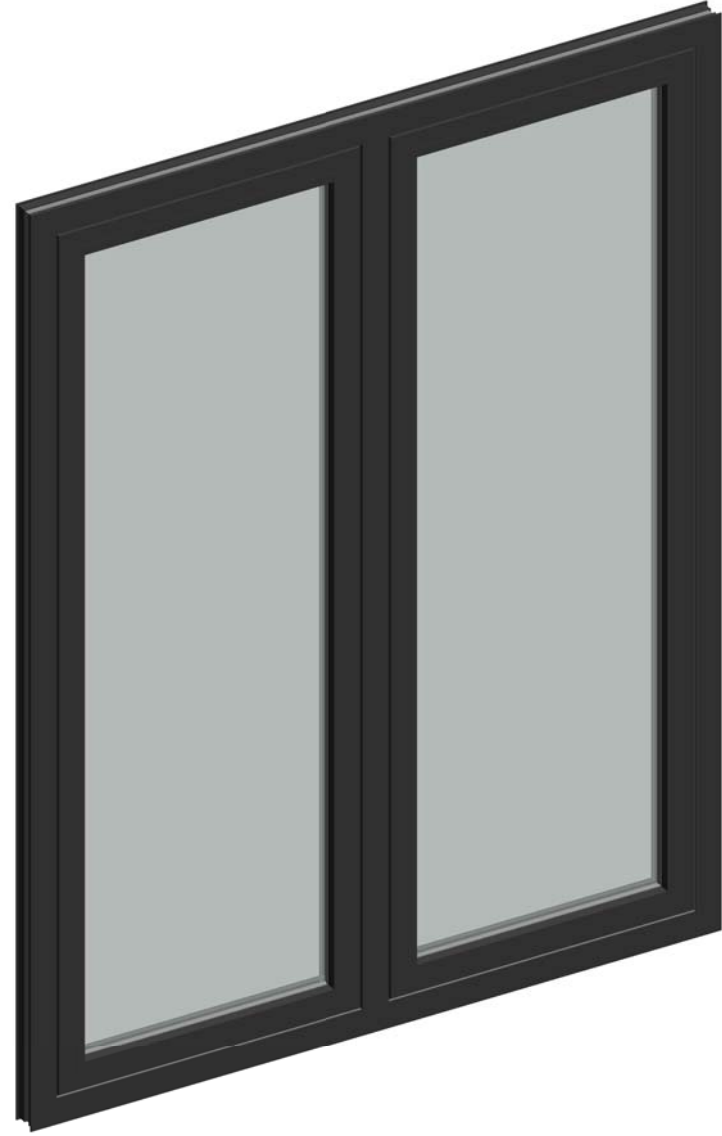
项目名称
 Project Name
26m² PrefabX-SPD

图名
 Title
Facade of Doors and Windows

工程编号 Title	-	专业 Title	JZ
比例 Scale		图号 Draw.No	J-302

未盖技术出图章 本图纸无效
 This drawing is valid only after being stamped and released by the R&D

电力	暖通	动力
建筑	结构	给排水
会	签	

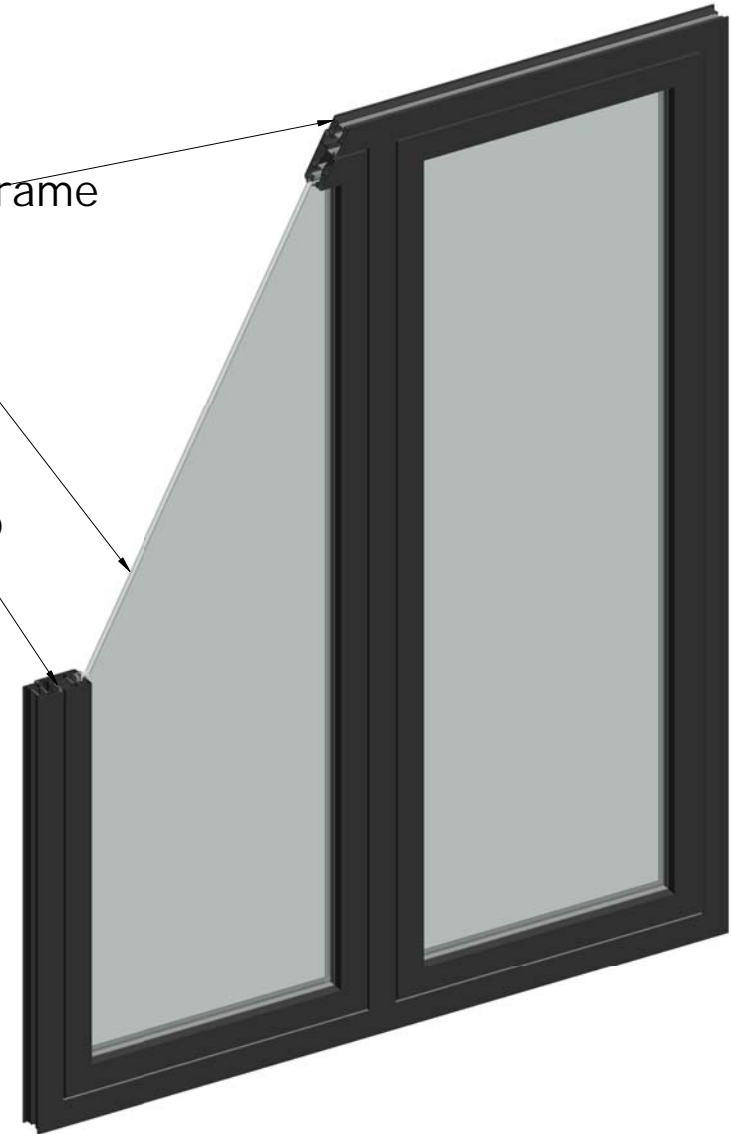


D1 Architectural Details

Aluminum Alloy Door Frame

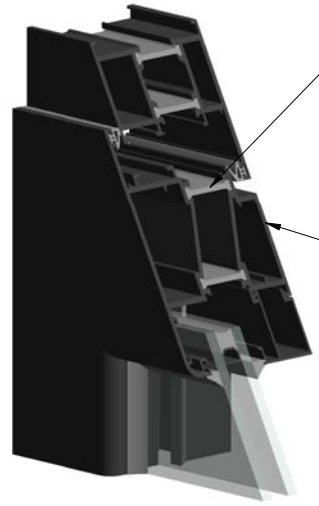
5+9+5 Double-Layer Tempered Glass

Sealing Strip



Sealing Strip

Aluminum Alloy Sections



Architectural Details of Door Material

Copyright 2016.

本图版权归浙江普天集成房屋有限公司所有，除本工程外本图的任何其它用途和复制，必须获得本公司的书面许可。
THE OWNERSHIP OF THE COPYRIGHT IN THIS DRAWING IS RETAINED BY ZHEJIANG PUTIAN INTEGRATED HOUSING CO.,LTD. WRITTEN CONSENT MUST BE OBTAINED BEFORE ANY USE OR REPRODUCTION OF THE DRAWING.

版本 Rev.	修改内容 Description	日期 Date	发布人 who send
------------	---------------------	------------	-----------------

PTH

Zhejiang Putian integrated housing Co., Ltd.
Hangzhou Zhongpu Architecture Design (institute) Co., Ltd.

证书等级

证书编号

合作设计单位
Cooperative Designer

工序 Process	签名 Signature	日期 Date
审定 Authorized By		
审核 Verified By		
项目负责人 Process		
校对人 Checked By		
设计 Designed By		
制图 Drawn By		

执业签章
Engineer Signature

出图签章
Engineer Signature

项目名称
Project Name

26m² PrefabX-SPD

图名
Architectural Details of Doors

工程编号 Title	-	专业 Type	JZ
比例 Scale		图号 Dwg. No.	J-303

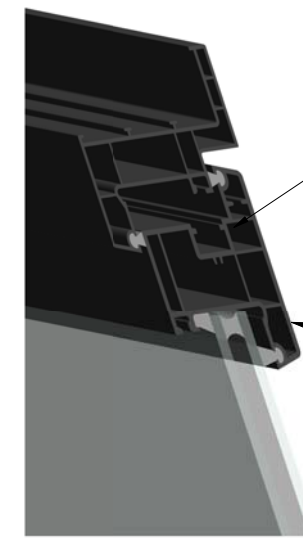
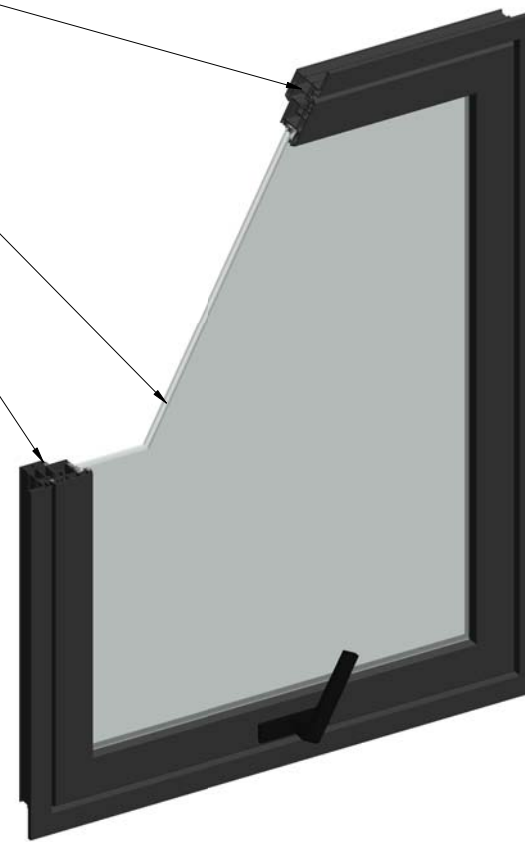
未盖技术出图章 本图纸无效
This drawing is valid only after being stamped and released by the office.

电力	暖通	动力
建筑	结构	给排水
会签		

Aluminum Alloy Window Frame

5+9+5 Double-Layer Tempered Glass

Sealing Strip



Sealing Strip

Aluminum Alloy Section

W1、W2 Architectural Details

Architectural Details of Window Material

Copyright 2016.

本图版权归浙江普天集成房屋有限公司所有，除本工程外对本图的任何其它用途和复制，必须获得本公司的书面许可。
THE OWNERSHIP OF THE COPYRIGHT IN THIS DRAWING IS RETAINED BY ZHEJIANG PUTIAN INTEGRATED HOUSING CO.,LTD. WRITTEN CONSENT MUST BE OBTAINED BEFORE ANY USE OR REPRODUCTION OF THE DRAWING.

版本 Rev.	修改内容 Description	日期 Date	发布人 who send
------------	---------------------	------------	-----------------

PTH

Zhejiang Putian integrated housing Co., Ltd.
Hangzhou Zhongpu Architecture Design (institute) Co., Ltd.

证书等级

证书编号

合作设计单位
Cooperative Designer

工序 Process	签名 Signature	日期 Date
审定 Authorized By		
审核 Verified By		
项目负责人 Process		
校对人 Checked By		
设计 Designed By		
制图 Drawn By		

执业签章
Engineer Signature

出图签章
Engineer Signature

项目名称
Project Name

26m² PrefabX-SPD

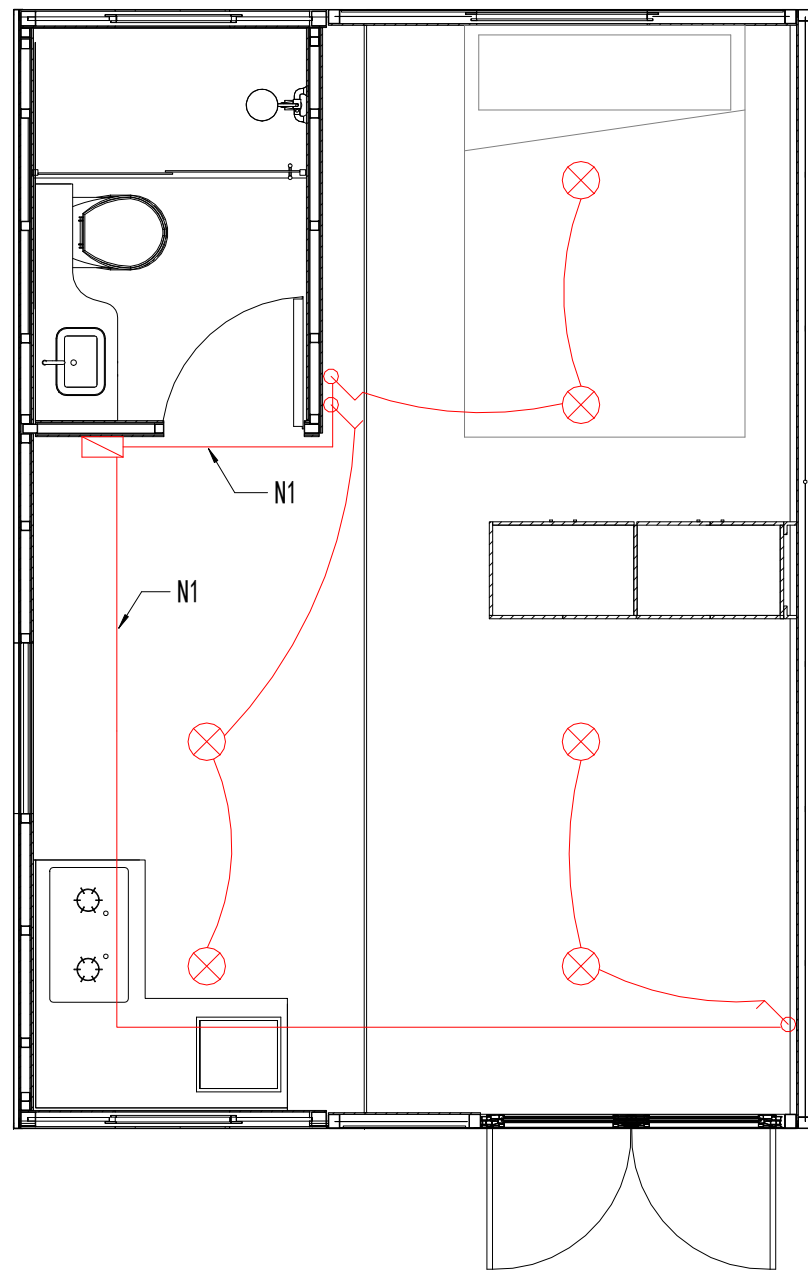
图名

Architectural Details of Windows

工程编号 Title	-	专业 Type	JZ
比例 Scale		图号 Dwg. No.	J-304

未盖技术出图章 本图纸无效
This drawing is valid only after being stamped and

会签	建筑	电力
给排水	结构	暖通
		动力



Lighting Power Layout

Electrical Equipment

Sign	Name	Qty
⊗	Dome Light	6
⊗	Single Control Switch (H=1240mm)	3
□	Distribution Box	1

Copyright 2016.

本图版权归浙江普天集成房屋有限公司所有，除本工程外本图的任何其它用途和复制，必须获得本公司的书面许可。
THE OWNERSHIP OF THE COPYRIGHT IN THIS DRAWING IS RETAINED BY ZHEJIANG PUTIAN INTEGRATED HOUSING CO.,LTD. WRITTEN CONSENT MUST BE OBTAINED BEFORE ANY USE OR REPRODUCTION OF THE DRAWING.

版本 Rev.	修改内容 Description	日期 Date	发布人 who send



Zhejiang Putian integrated housing Co., Ltd.
Hangzhou Zhongpu Architecture Design (institute) Co., Ltd.

证书等级

证书编号

合作设计单位
Cooperative Designer

工序 Process	签名 Signature	日期 Date
审定 Authorized By		
审核 Verified By		
项目负责人 Process		
校对人 Checked By		
设计 Designed By		
制图 Drawn By		

执业签章
Engineer Signature

出图签章
Engineer Signature

项目名称
Project Name

26m² PrefabX-SPD

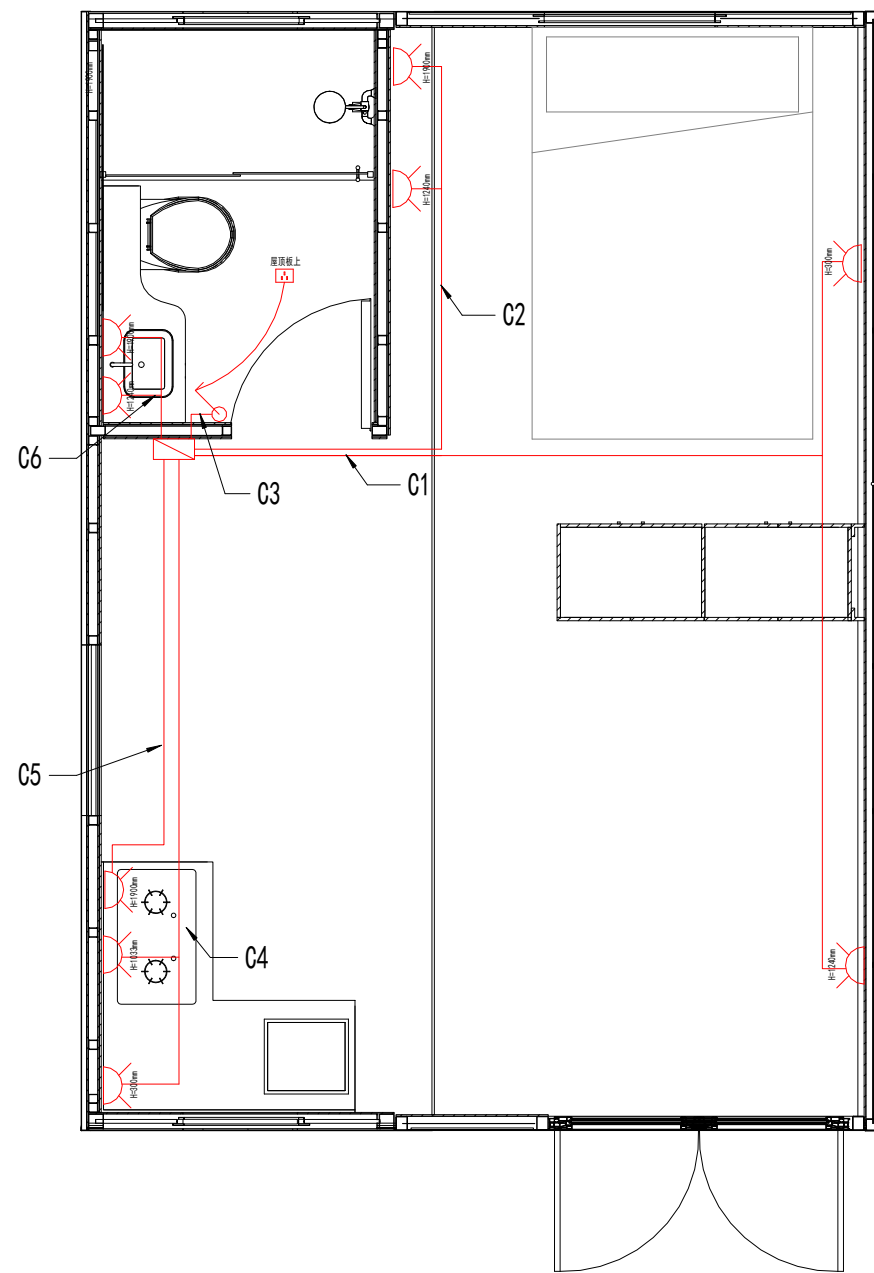
图名

Lighting Power Layout

工程编号 Title	专业 Type
-	JZ
比例 Scale	图号 Drawing No.
	J-401

未盖技术出图章 本图纸无效
This drawing is valid only after being stamped and

会签	建筑	电力
给排水	结构	暖通
		动力



Socket Power Layout

Electrical Equipment

Sign	Name	Qty
	Double-Plug Socket	12
	Bathroom Heat Lamp Socket	1
	Single Control Switch (H=1240mm)	1
	AC Socket	3
	Distribution Box	1

Copyright 2016.

本图版权归浙江中天集成房屋有限公司所有，除本工程外对本图的任何其它用途和复制，必须获得本公司的书面许可。
THE OWNERSHIP OF THE COPYRIGHT IN THIS DRAWING IS RETAINED BY ZHEJIANG PUTIAN INTEGRATED HOUSING CO.,LTD. WRITTEN CONSENT MUST BE OBTAINED BEFORE ANY USE OR REPRODUCTION OF THE DRAWING.

版本 Rev.	修改内容 Description	日期 Date	发布人 who send
------------	---------------------	------------	-----------------



Zhejiang Putian integrated housing Co., Ltd.
Hangzhou Zhongpu Architecture Design (institute) Co., Ltd.

证书等级

证书编号

合作设计单位
Cooperative Designer

工序 Process	签名 Signature	日期 Date
审定 Authorized By		
审核 Verified By		
项目负责人 Process		
校对人 Checked By		
设计 Designed By		
制图 Drawn By		

执业签章
Engineer Signature

出图签章
Engineer Signature

项目名称
Project Name

26m² PrefabX-SPD

图名

Socket Power Layout

工程编号 Title	-	专业 Type	JZ
比例 Scale		图号 Dwg.No	J-402

未盖技术出图章 本图纸无效

This drawing is valid only after being stamped and

电力	暖通	动力
建筑	结构	给排水
会	签	

Distribution Box

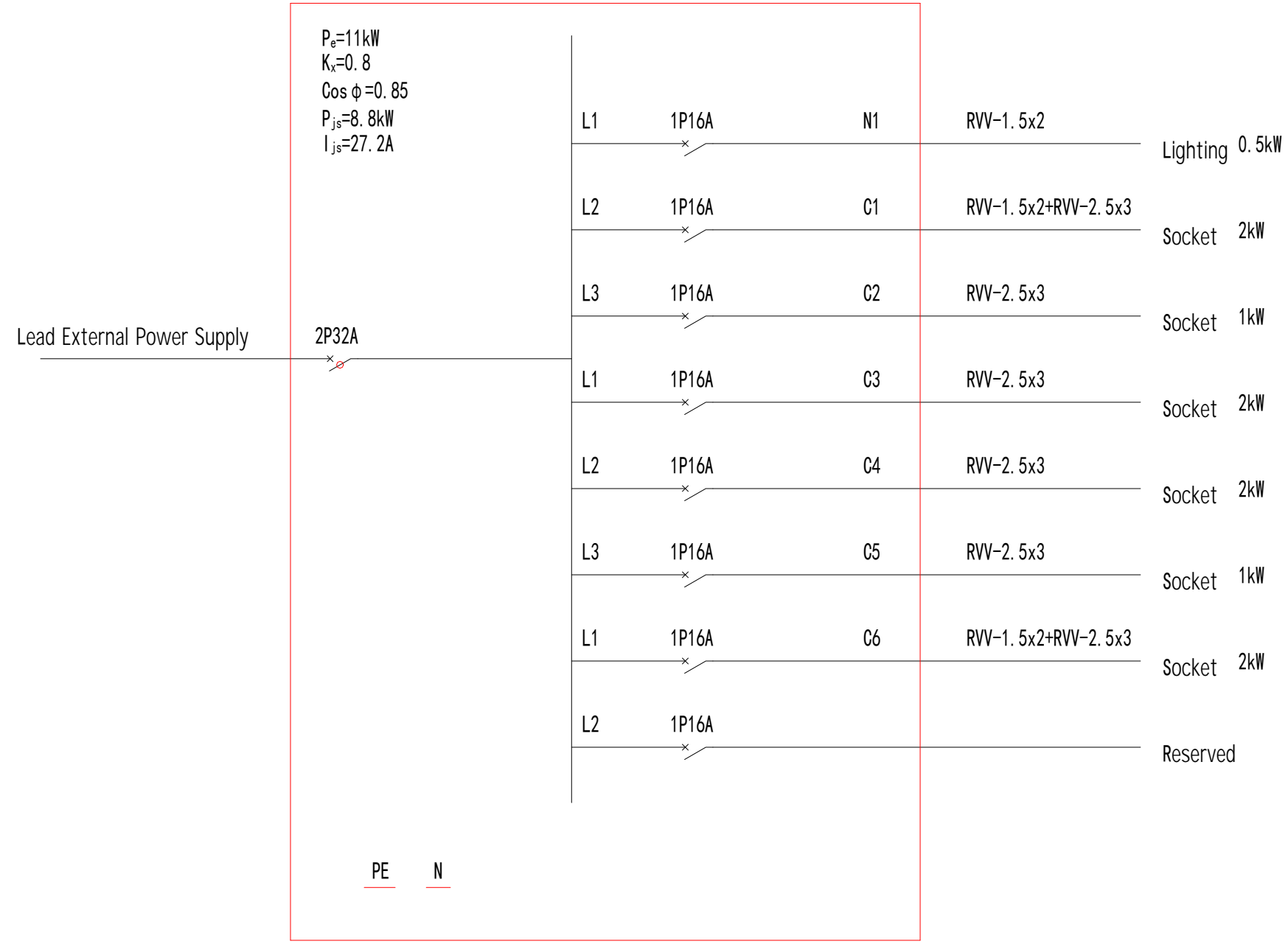


Diagram of Power System

Copyright 2016.
 本图版权归浙江普天集成房屋有限公司所有，除本工程外对本图的任何其它用途和复制，必须获得本公司的书面许可。
 THE OWNERSHIP OF THE COPYRIGHT IN THIS DRAWING IS RETAINED BY ZHEJIANG PUTIAN INTEGRATED HOUSING CO.,LTD. WRITTEN CONSENT MUST BE OBTAINED BEFORE ANY USE OR REPRODUCTION OF THE DRAWING.

版本 Rev.	修改内容 Description	日期 Date	发布人 who send
---------	------------------	---------	--------------

PTH
 Zhejiang Putian integrated housing Co., Ltd.
 Hangzhou Zhongpu Architecture Design (institute) Co., Ltd.

证书等级
 证书编号

合作设计单位
 Cooperative Designer

工序 Process	签名 Signature	日期 Date
审定 Authorized By		
审核 Verified By		
项目负责人 Process		
校对人 Checked By		
设计 Designed By		
制图 Drawn By		

执业签章
 Engineer Signature

出图签章
 Engineer Signature

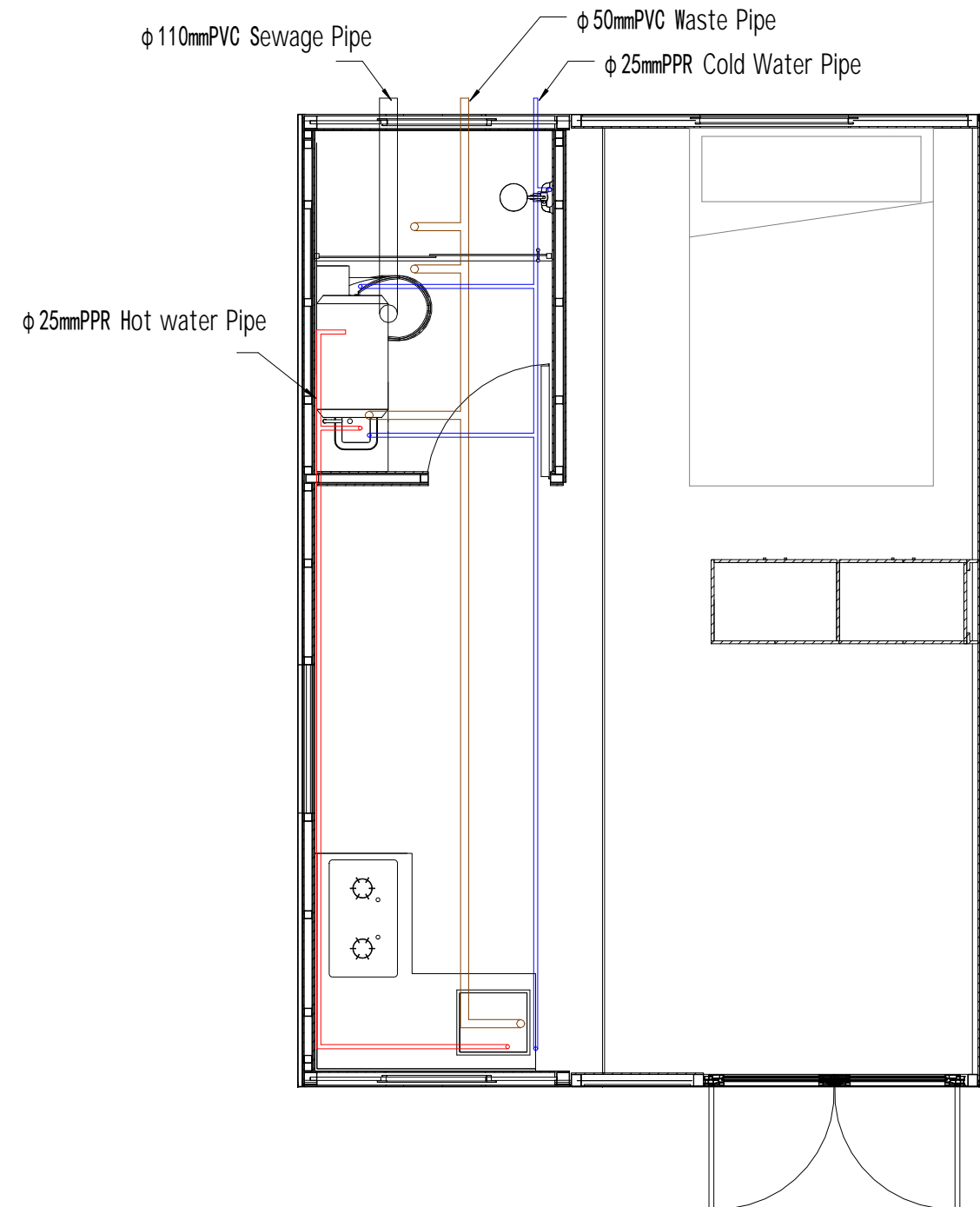
项目名称
 Project Name
 26m² PrefabX-SPD

图名
 Diagram of Power System

工程编号 Title	-	专业 Trade	JZ
比例 Scale		图号 Drawing No.	J-403

未盖技术出图章 本图纸无效
 This drawing is valid only after being stamped and released by the office.

电力	暖通	动力
建筑	结构	给排水
会	签	



Water Supply and Drainage Plan

Copyright 2016.

本图版权归浙江普天集成房屋有限公司所有，除本工程外对本图的任何其它用途和复制，必须获得本公司的书面许可。
THE OWNERSHIP OF THE COPYRIGHT IN THIS DRAWING IS RETAINED BY ZHEJIANG PUTIAN INTEGRATED HOUSING CO.,LTD. WRITTEN CONSENT MUST BE OBTAINED BEFORE ANY USE OR REPRODUCTION OF THE DRAWING.

版本 Rev.	修改内容 Description	日期 Date	发布人 who send
------------	---------------------	------------	-----------------

PTH

Zhejiang Putian integrated housing Co., Ltd.
Hangzhou Zhongpu Architecture Design (institute) Co., Ltd.

证书等级

证书编号

合作设计单位
Cooperative Designer

工序 Process	签名 Signature	日期 Date
审定 Authorized By		
审核 Verified By		
项目负责人 Process		
校对人 Checked By		
设计 Designed By		
制图 Drawn By		

执业签章
Engineer Signature

出图签章
Engineer Signature

项目名称
Project Name

26m² PrefabX-SPD

图名

Water Supply and Drainage Plan

工程编号 Title	-	专业 Type	JZ
比例 Scale		图号 Drawing No.	J-404

未盖技术出图章 本图纸无效
This drawing is valid only after being stamped and
released by the client.

电力	暖通	动力
建筑	结构	给排水
会	签	

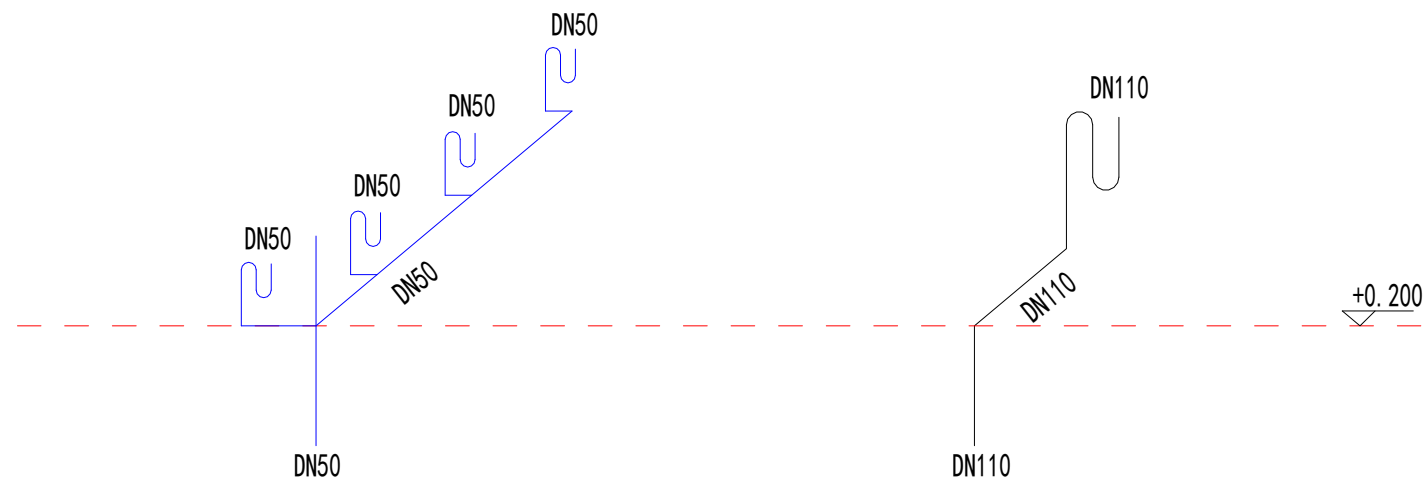


Diagram of Waste Water Drainage System

Diagram of Sewage Drainage System

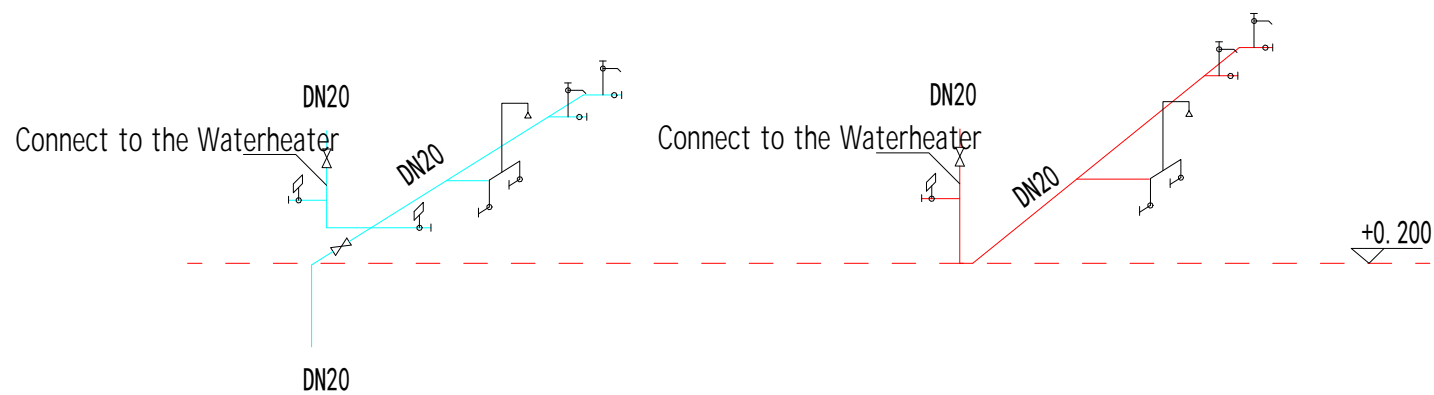


Diagram of Cold Water Inlet System

Diagram of Hot Water Inlet System

Copyright 2016.

本图版权归浙江普天集成房屋有限公司所有，除本工程外本图的任何其它用途和复制，必须获得本公司的书面许可。
THE OWNERSHIP OF THE COPYRIGHT IN THIS DRAWING IS RETAINED BY ZHEJIANG PUTIAN INTEGRATED HOUSING CO.,LTD. WRITTEN CONSENT MUST BE OBTAINED BEFORE ANY USE OR REPRODUCTION OF THE DRAWING.

版本 Rev.	修改内容 Description	日期 Date	发布人 who send
------------	---------------------	------------	-----------------



Zhejiang Putian integrated housing Co., Ltd.
Hangzhou Zhongpu Architecture Design (institute) Co., Ltd.

证书等级

证书编号

合作设计单位
Cooperative Designer

工序 Process	签名 Signature	日期 Date
---------------	-----------------	------------

审定
Authorized By

审核
Verified By

项目负责人
Process

校对人
Checked By

设计
Designed By

制图
Drawn By

执业签章
Engineer Signature

出图签章
Engineer Signature

项目名称
Project Name

26m² PrefabX-SPD

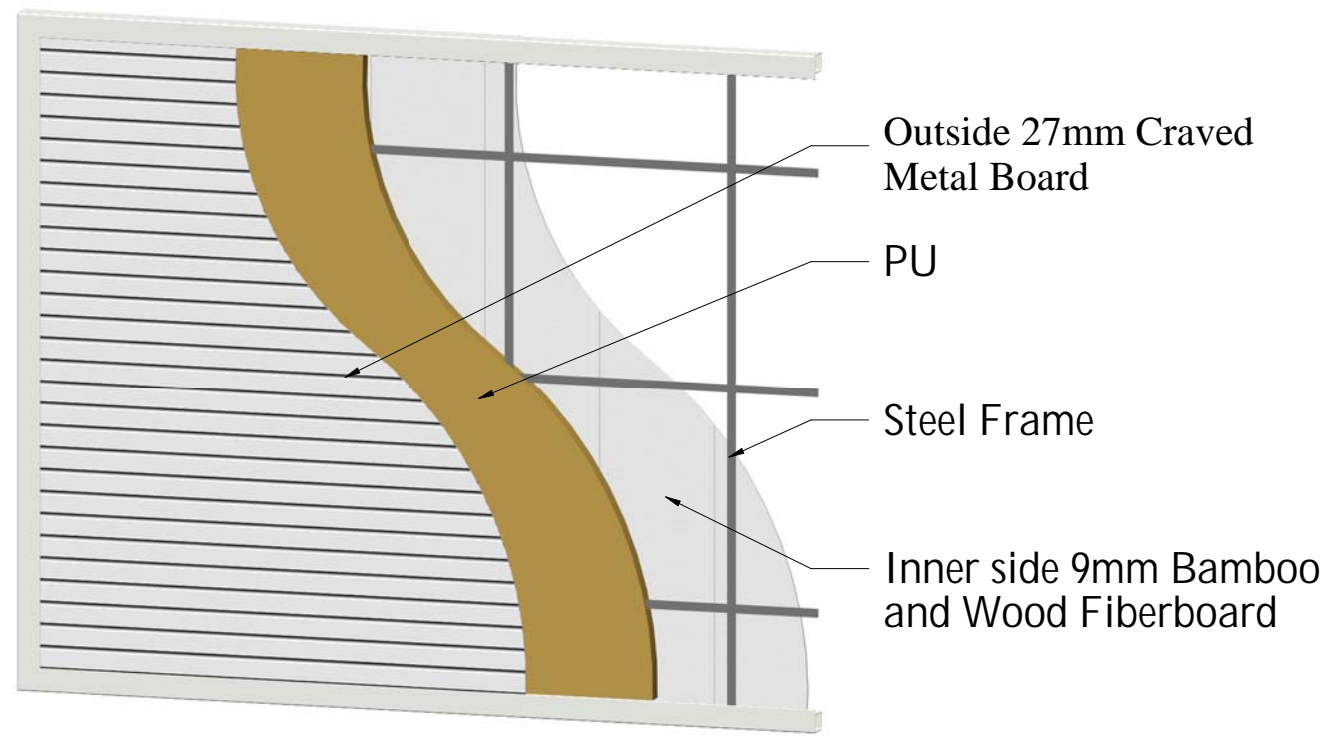
图名
Diagram of Water Supply and Drainage System

工程编号 Time	-	专业 Type	JZ
--------------	---	------------	----

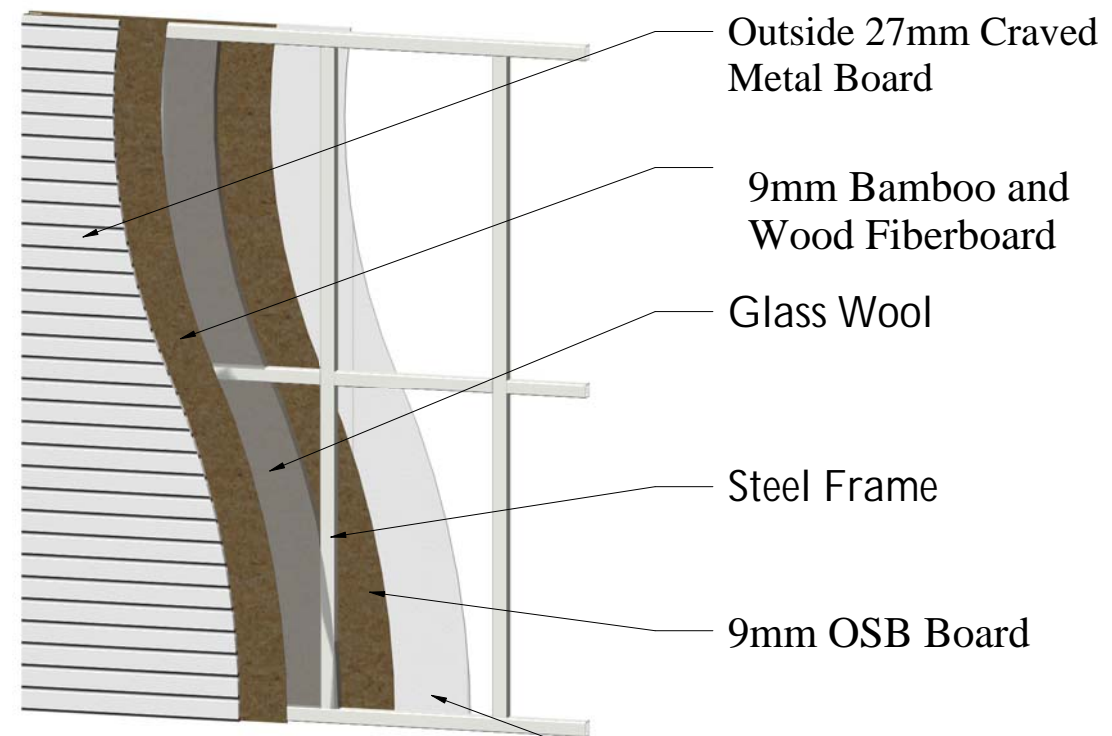
比例 Scale		图号 Dwg. No.	J-405
-------------	--	----------------	-------

未盖技术出图章 本图纸无效
This drawing is valid only after being stamped and released by the office.

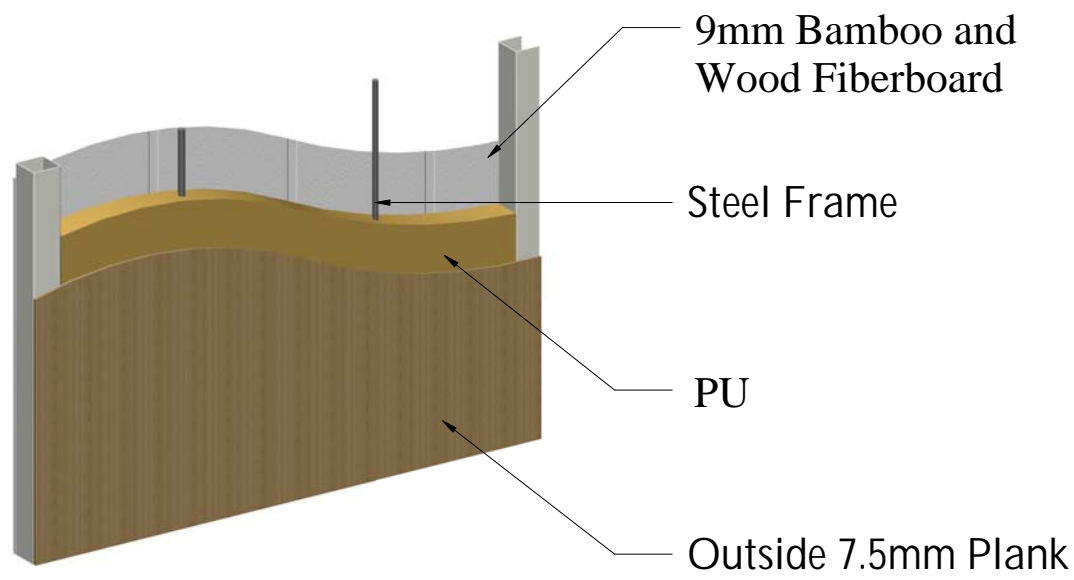
暖通	动力
电力	
建筑	结构
给排水	
会签	



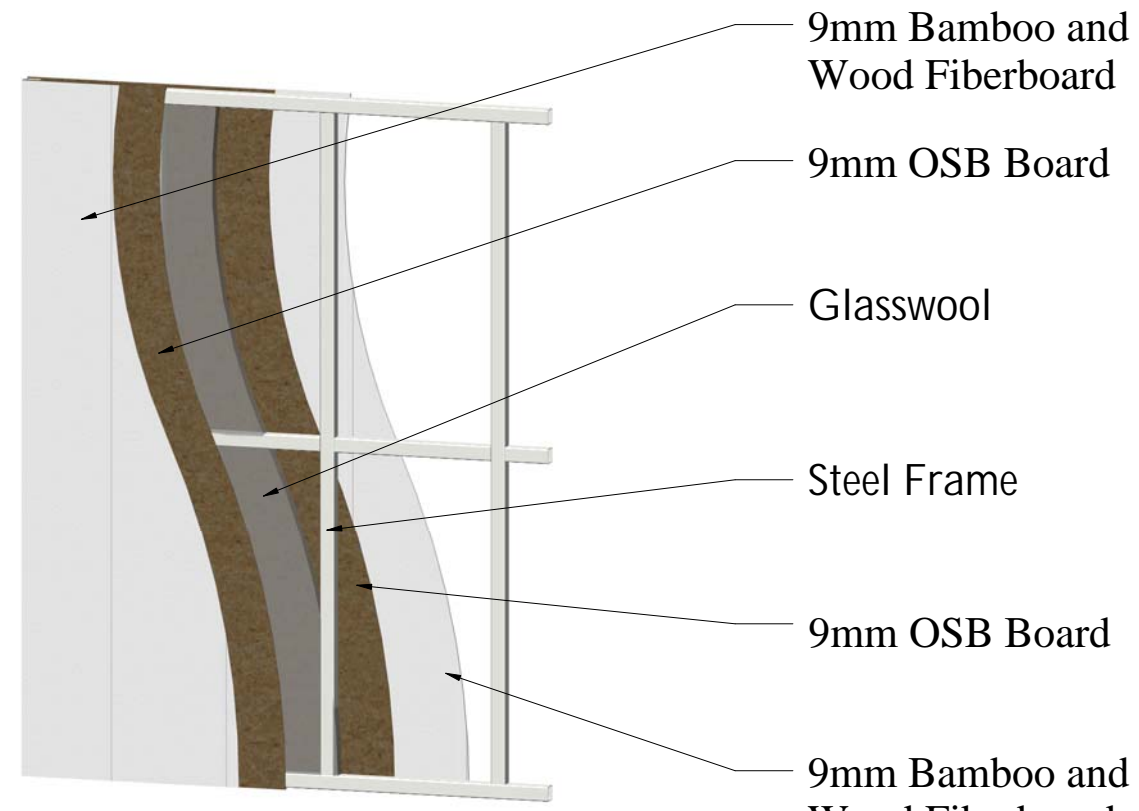
Section View of Side Fascia



Section View of Kitchen and Bathroom



Section View of Side Fascia of Kitchen and Bathroom Module



Section View of Interior Wallboard

Copyright 2016.
 本图版权归浙江中天集成房屋有限公司所有，除本工程外对本图的任何其它用途和复制，必须取得本公司的书面许可。
 THE OWNERSHIP OF THE COPYRIGHT IN THIS DRAWING IS RETAINED BY ZHEJIANG PUTIAN INTEGRATED HOUSING CO.,LTD. WRITTEN CONSENT MUST BE OBTAINED BEFORE ANY USE OR REPRODUCTION OF THE DRAWING.

版本	修改内容	日期	发布人
Rev.	Description	Date	who send



Zhejiang Putian integrated housing Co.,Ltd.Hangzhou Zhongpu Architecture Design (institute)Co.,Ltd.

证书等	
级证书	
编号	
合作设计单位	
Cooperative Designer	

工序	签名	日期
Process	Signature	Date
审定		
Authorized By		
审核		
Verified By		
项目负责人		
Process		
校对		
Checked By		
设计		
Designed By		
制图		
Drawn By		

执业签章
 Engineer Signature

出图签章
 Engineer Signature

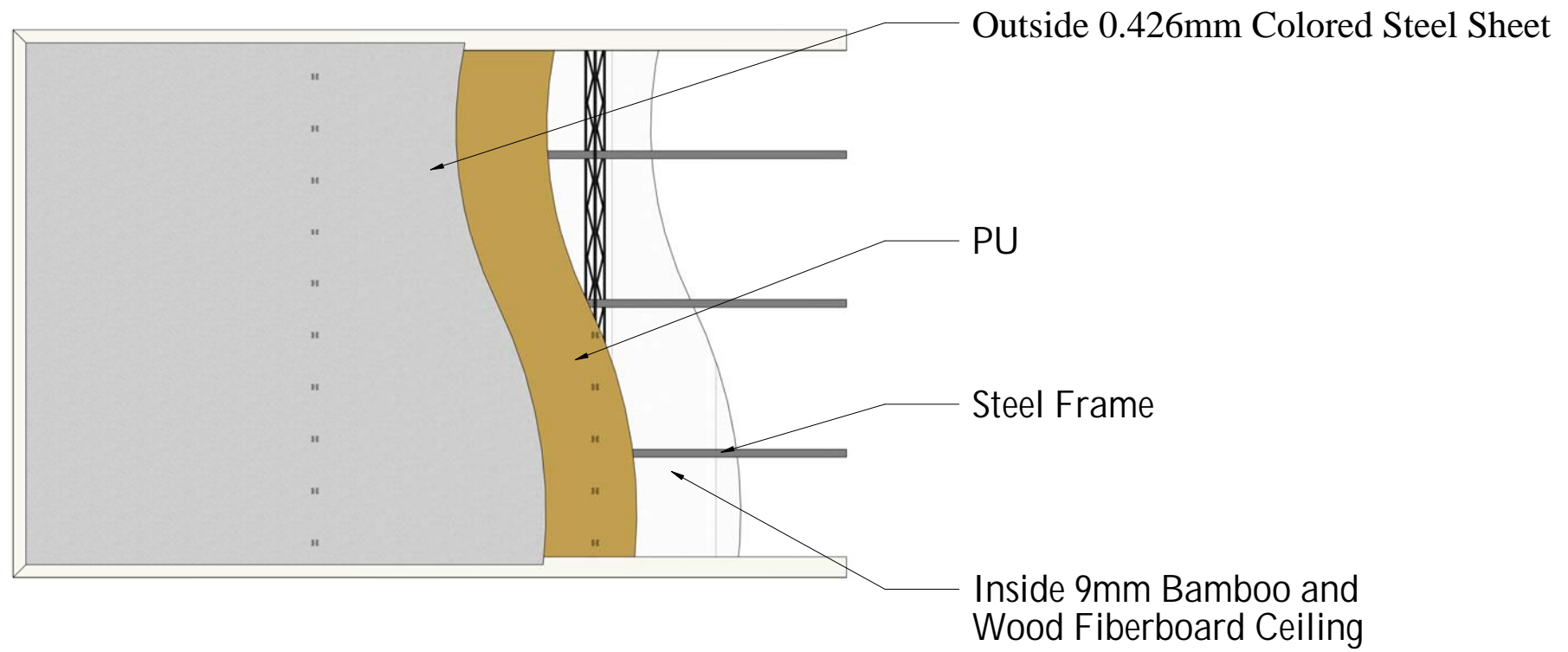
项目名称
 Project Name
 26m² PrefabX-SPD

图名
 Title
 Section View of Wallboard

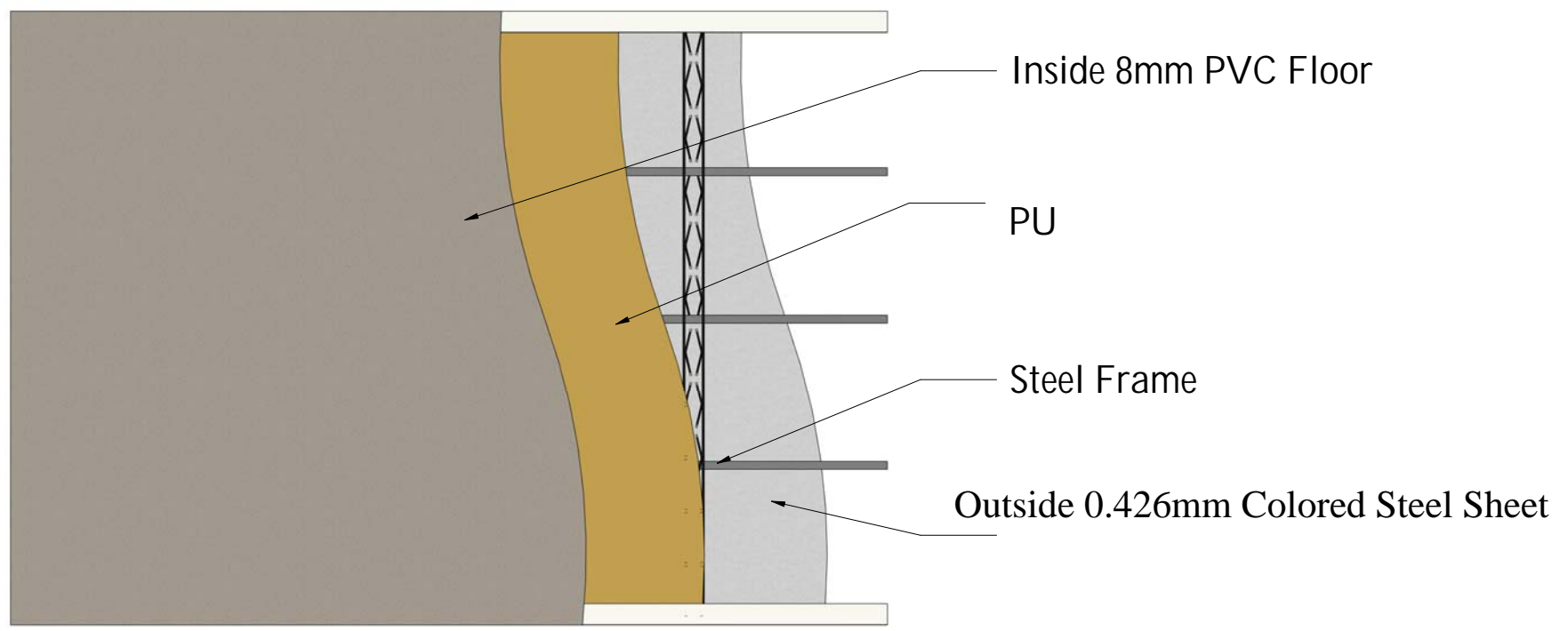
工程编号	-	专业	JZ
Title		Time	
比例		图号	J- 501
Scale		Dep.No	

未盖技术出图章 本图纸无效
 This drawing is valid only after being stamped and released by the R&D

会签	建筑	电力	暖通	动力
结构	给排水			



Section View of Ceiling



Section View of Floor

Copyright 2016.
 本图版权归浙江中天集成房屋有限公司所有，除本工程外对本国的任何其它用途和复制，必须取得本公司的书面许可。
 THE OWNERSHIP OF THE COPYRIGHT IN THIS DRAWING IS RETAINED BY ZHEJIANG PUTIAN INTEGRATED HOUSING CO.,LTD. WRITTEN CONSENT MUST BE OBTAINED BEFORE ANY USE OR REPRODUCTION OF THE DRAWING.

版本 Rev.	修改内容 Description	日期 Date	发布人 who send
---------	------------------	---------	--------------



Zhejiang Putian integrated housing Co.,Ltd.Hangzhou Zhongpu Architecture Design (institute)Co.,Ltd.

证书等	
级证书	
编号 合作设计单位 Cooperative Designer	

工序 Process	签名 Signature	日期 Date
审定 Authorized By		
审核 Verified By		
项目负责人 Process		
校对人 Checked By		
设计 Designed By		
制图 Drawn By		

执业签章
Engineer Signature

出图签章
Engineer Signature

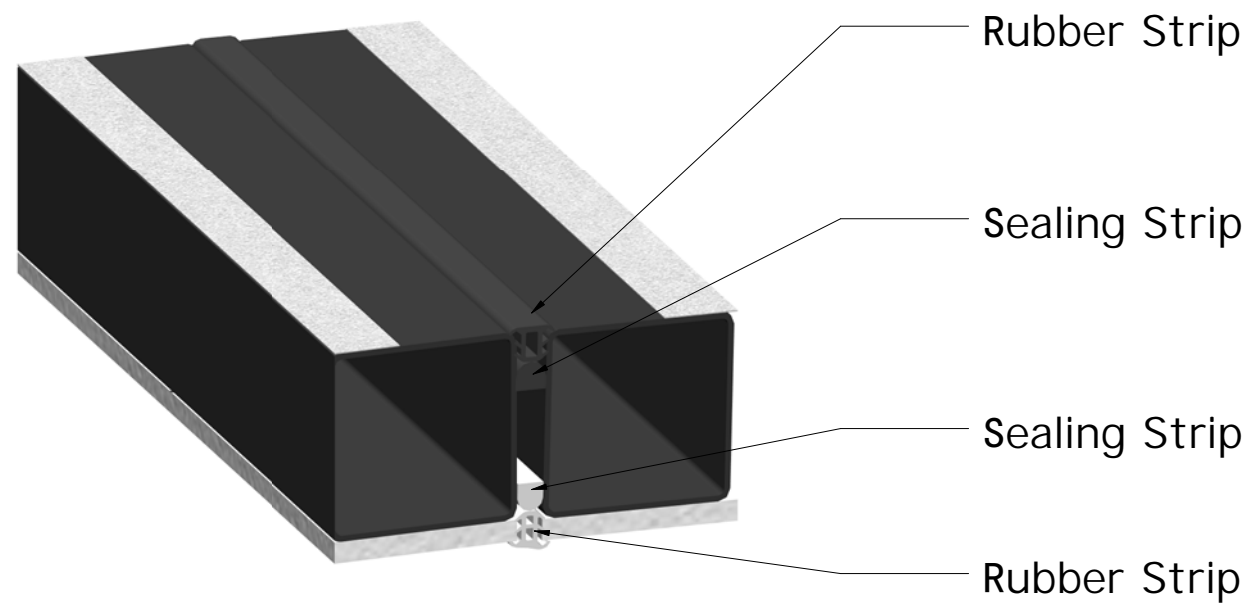
项目名称
Project Name
26m² PrefabX-SPD

图名
Title
Section View of Floor and Ceiling

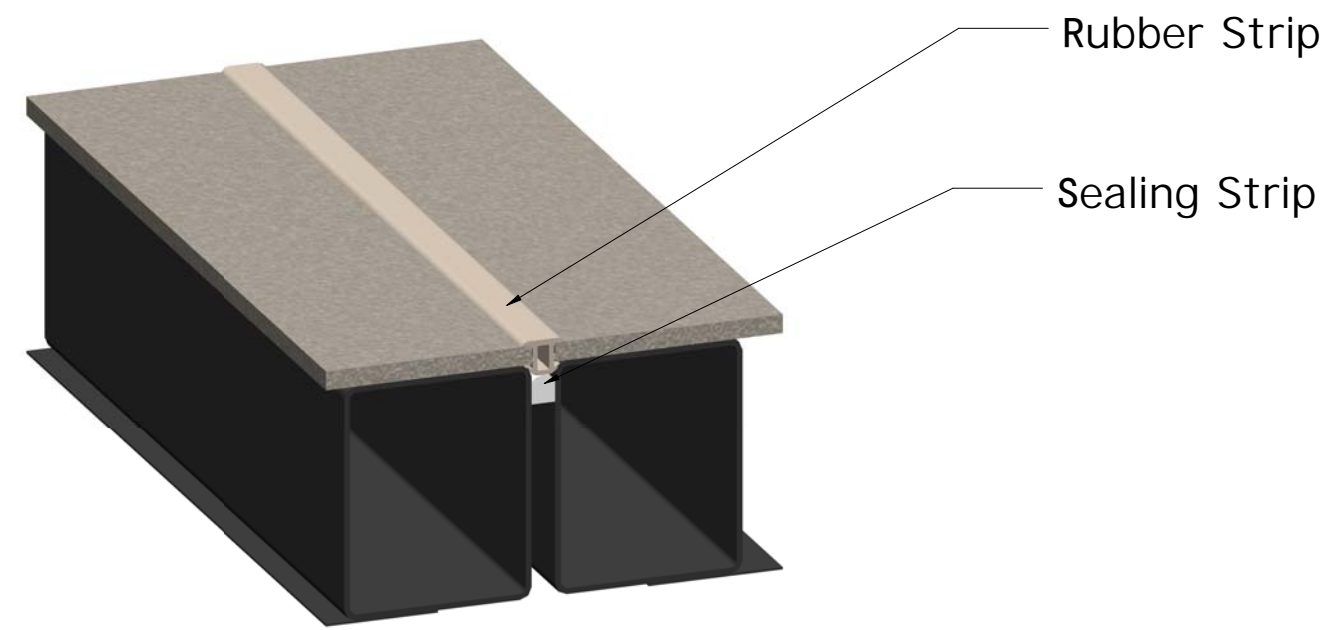
工程编号 Title	-	专业 Type	JZ
比例 Scale		图号 Dep.No	J- 502

未盖技术出图章 本图纸无效
This drawing is valid only after being stamped and released by the R&D

电力	暖通	动力
建筑	结构	给排水
会签		



① Architectural Details of Ceiling Sealing Strips



② Architectural Details of Floor Sealing Strips

Copyright 2016.
 本图版权归浙江普天集成房屋有限公司所有，除本工程外本图的任何其它用途和复制，
 必须获得本公司的书面许可。
 THE OWNERSHIP OF THE COPYRIGHT IN THIS DRAWING IS RETAINED BY
 ZHEJIANG PUTIAN INTEGRATED HOUSING CO.,LTD. WRITTEN CONSENT MUST BE
 OBTAINED BEFORE ANY USE OR REPRODUCTION OF THE DRAWING.

版本 Rev.	修改内容 Description	日期 Date	发布人 who send

PTH
 Zhejiang Putian integrated housing Co., Ltd.
 Hangzhou Zhongpu Architecture Design (institute) Co., Ltd.

证书等级
 证书编号

合作设计单位
 Cooperative Designer

工序 Process	签名 Signature	日期 Date
审定 Authorized By		
审核 Verified By		
项目负责人 Process		
校对人 Checked By		
设计 Designed By		
制图 Drawn By		

执业签章
 Engineer Signature

出图签章
 Engineer Signature

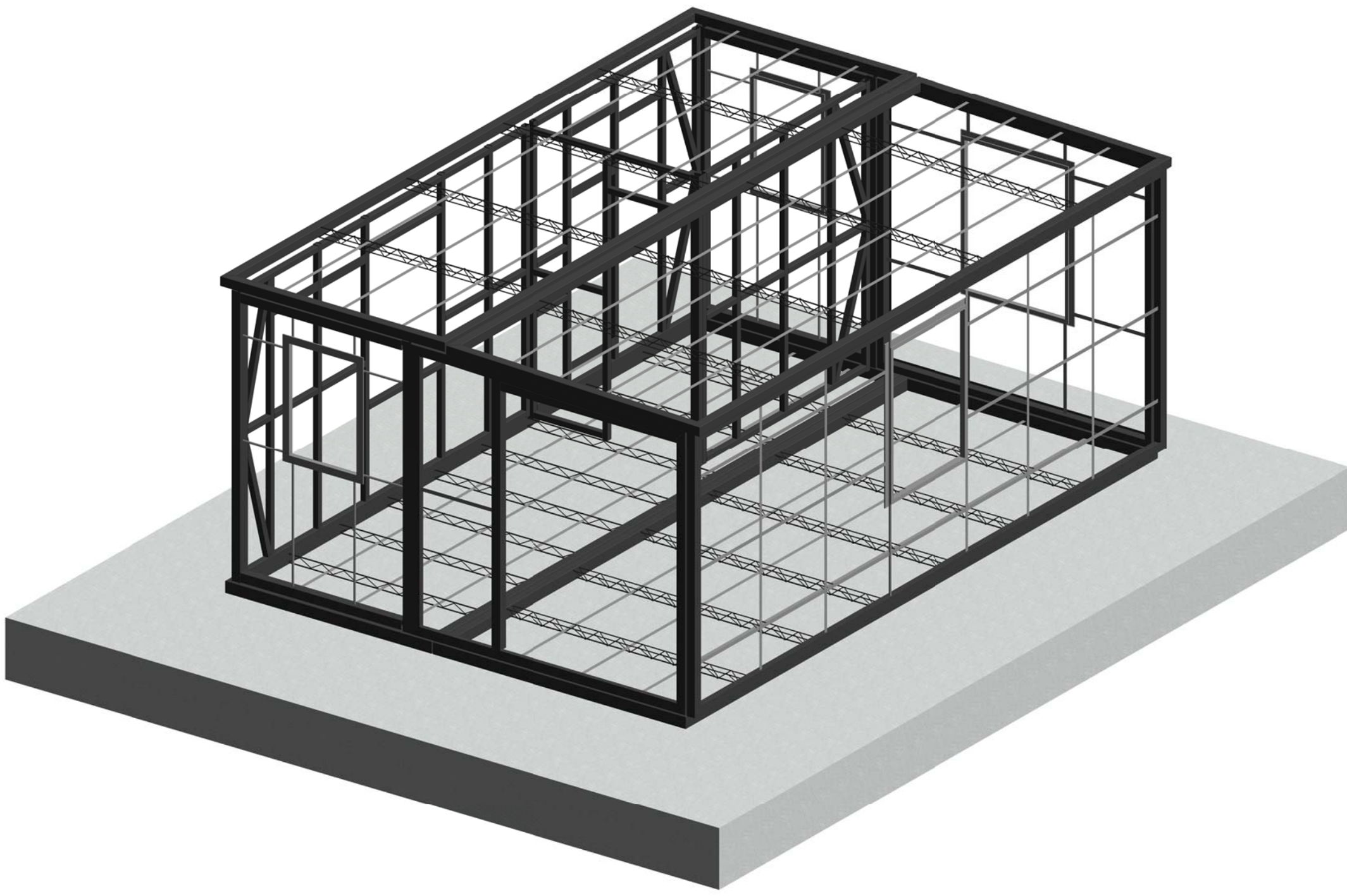
项目名称
 Project Name
 26m² PrefabX-SPD

图名
 Diagram of Sealing Node

工程编号 Title	-	专业 Type	JZ
比例 Scale		图号 Dwg No.	J-601

未盖技术出图章 本图纸无效
 This drawing is valid only after being stamped and
 released by the office.

会签	建筑	电力
给排水	结构	暖通
		动力



Copyright 2016.

本图版权归浙江普天集成房屋有限公司所有，除本工程外对本图的任何其它用途和复制，必须获得本公司的书面许可。
THE OWNERSHIP OF THE COPYRIGHT IN THIS DRAWING IS RETAINED BY ZHEJIANG PUTIAN INTEGRATED HOUSING CO.,LTD. WRITTEN CONSENT MUST BE OBTAINED BEFORE ANY USE OR REPRODUCTION OF THE DRAWING.

版本 Rev.	修改内容 Description	日期 Date	发布人 who send
------------	---------------------	------------	-----------------

PTH

Zhejiang Putian integrated housing Co., Ltd.
Hangzhou Zhongpu Architecture Design (institute) Co., Ltd.

证书等级

证书编号

合作设计单位
Cooperative Designer

工序 Process	签名 Signature	日期 Date
审定 Authorized By		
审核 Verified By		
项目负责人 Process		
校对人 Checked By		
设计 Designed By		
制图 Drawn By		

执业签章
Engineer Signature

出图签章
Engineer Signature

项目名称
Project Name

26m² PrefabX-SPD

图名

3D Structure Diagram

工程编号 Title	-	专业 Type	JZ
比例 Scale		图号 Dwg.No.	J-701

未盖技术出图章 本图纸无效
This drawing is valid only after being stamped and released by the office.